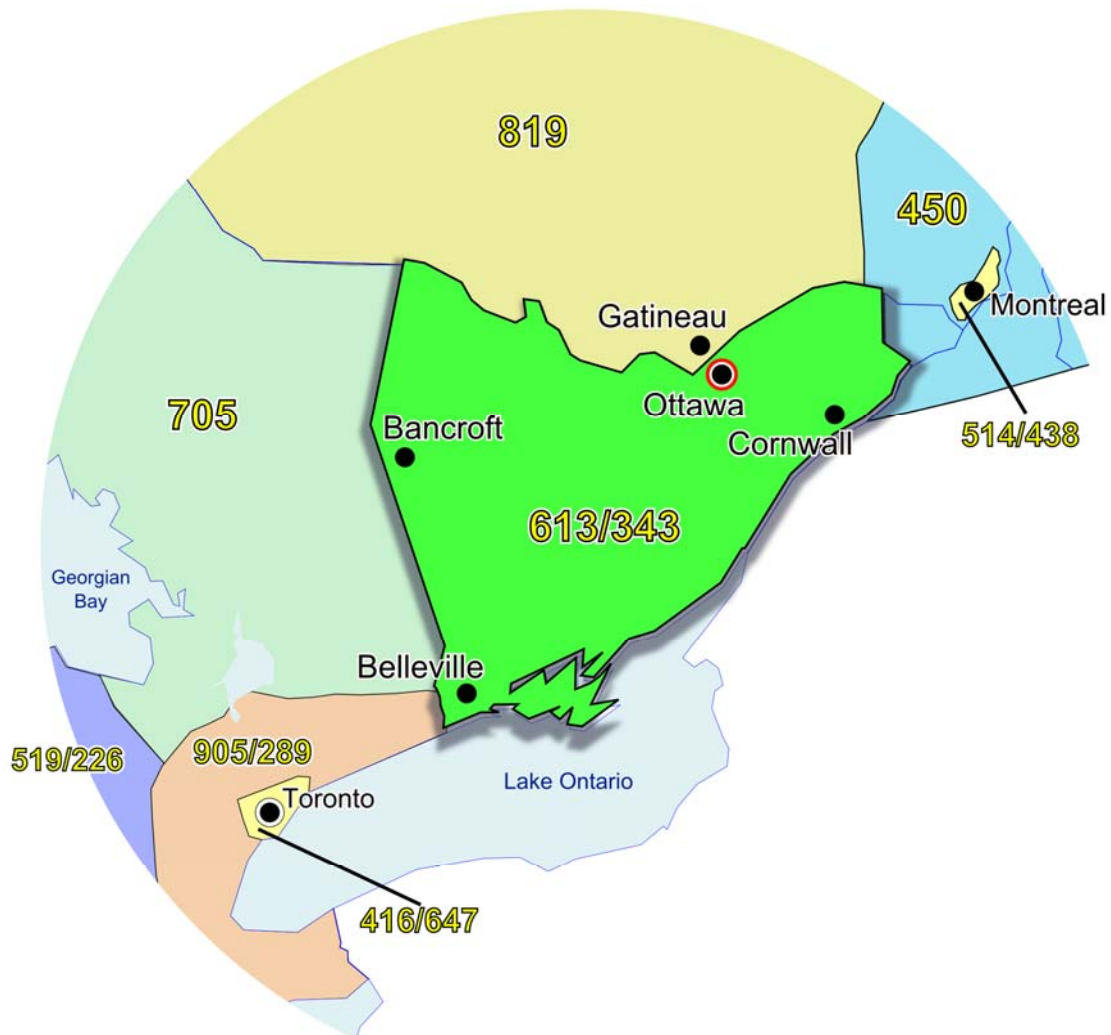


Annexes

Planning Document NPA 613 Numbering Relief



May 05, 2008

Canadian Numbering Administrator (CNA)
Suresh Khare
613-563-7242-315
60 Queen Street, Suite 1516
Ottawa, Ontario K1P 5Y7
khares@saiccanada.com



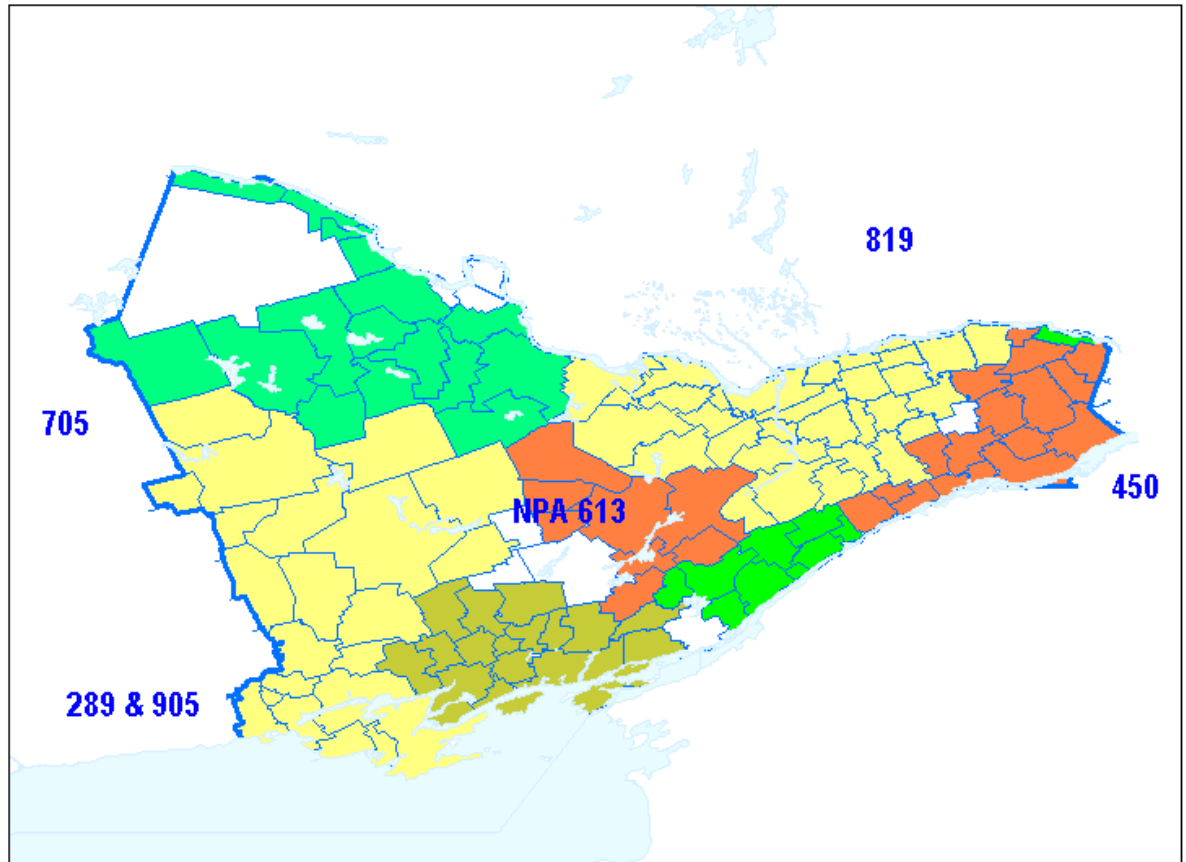


Figure 1 - Overview of NPA 613, Local Interconnection Regions and adjacent NPAs

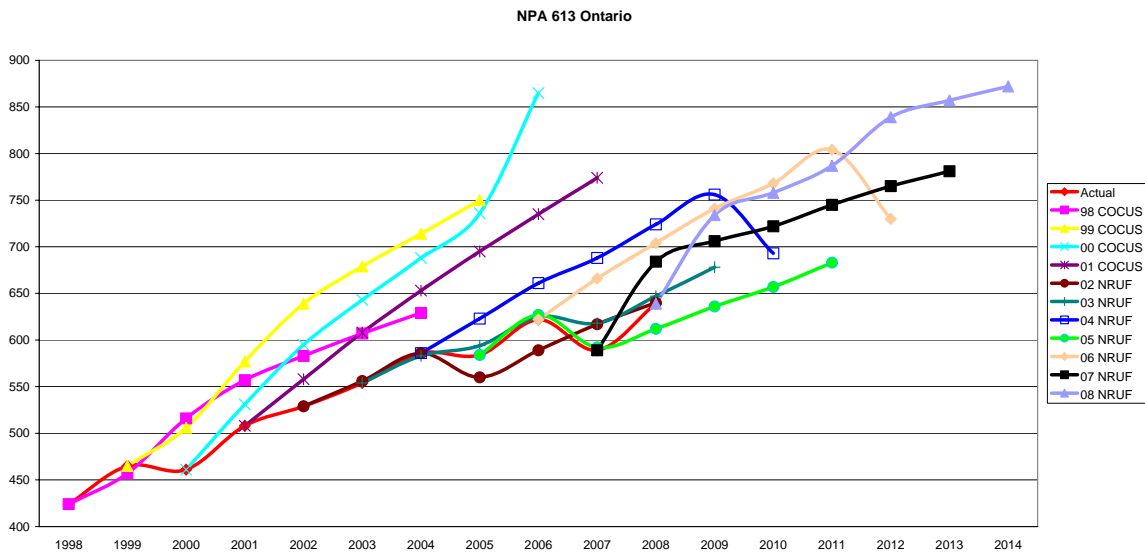


Figure 2 - NPA 613 Actual and Forecast CO Code Assignments

NPA 613 CO Code Exhaust July 2007 R-NRUF

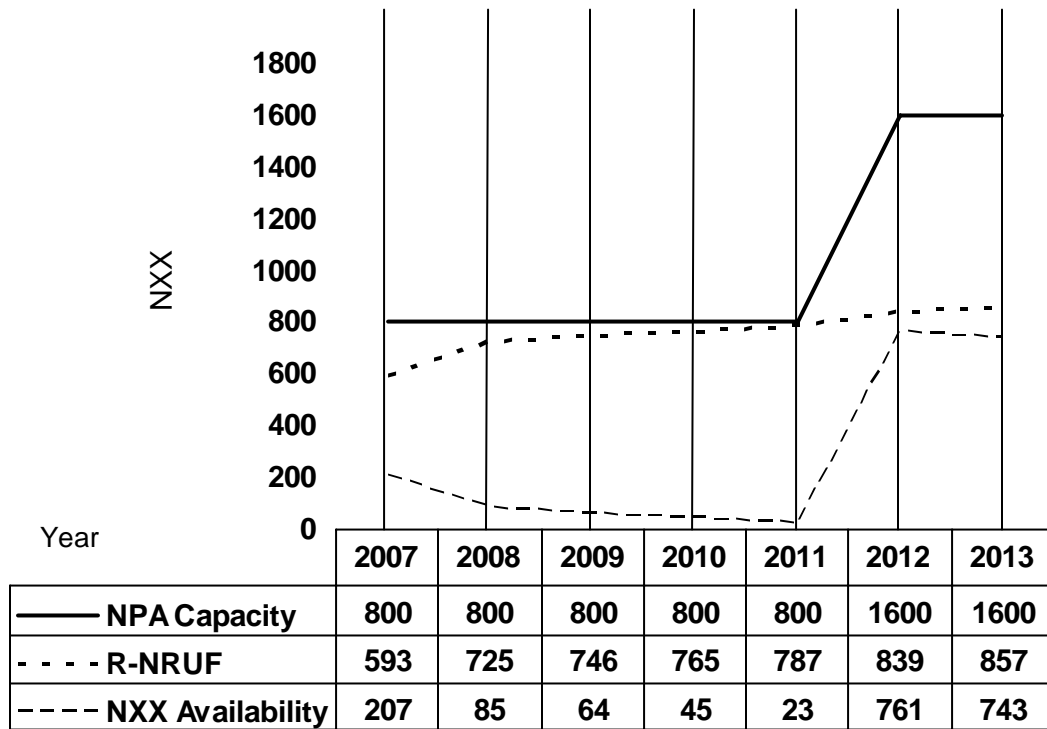


Figure 3 - NPA 613 CO Code Exhaust July 2007 R-NRUF

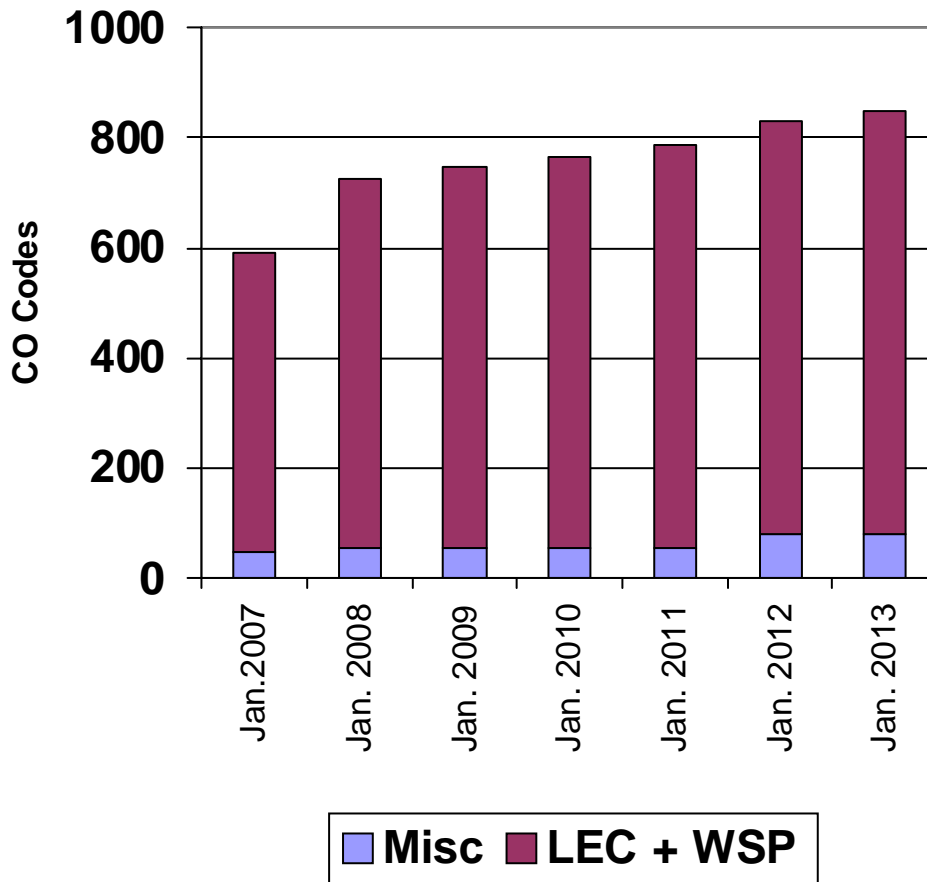


Figure 4 - NPA 613 CO Code Exhaust July 2007 R-NRUF

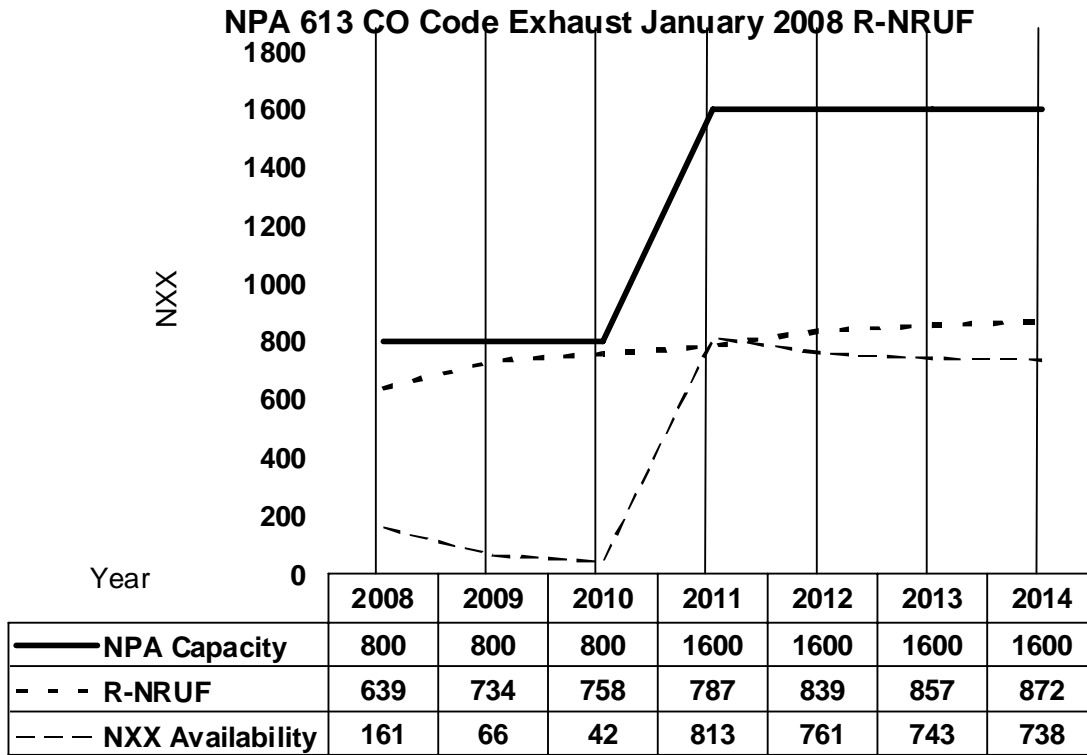


Figure 5 - NPA 613 CO Code Exhaust January 2008 R-NRUF

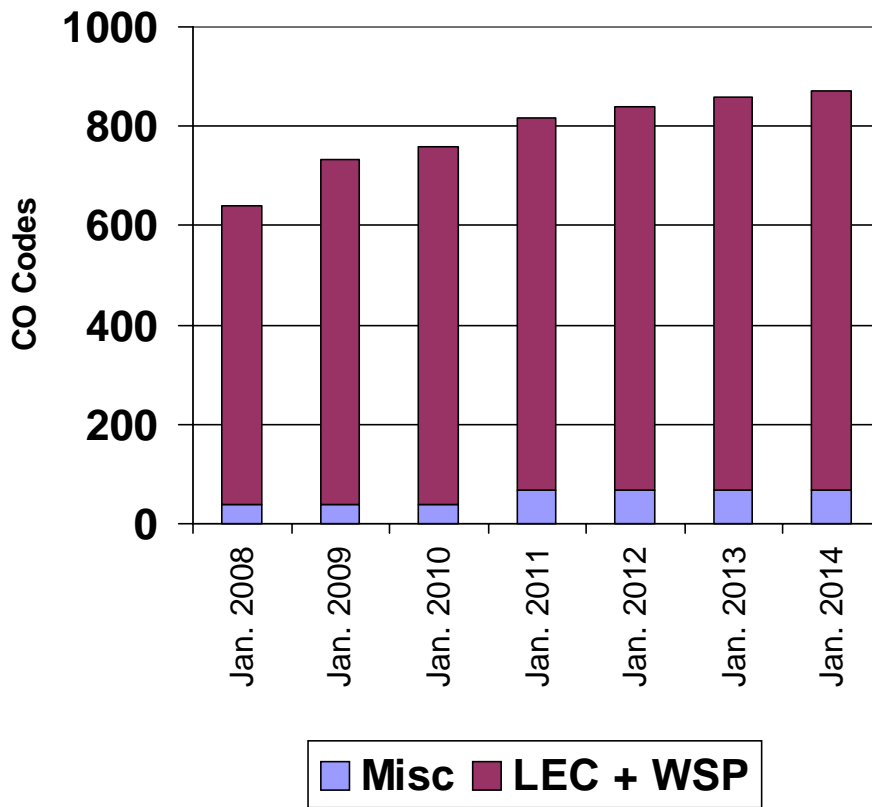


Figure 6 - NPA 613 CO Code Exhaust January 2008 R-NRUF

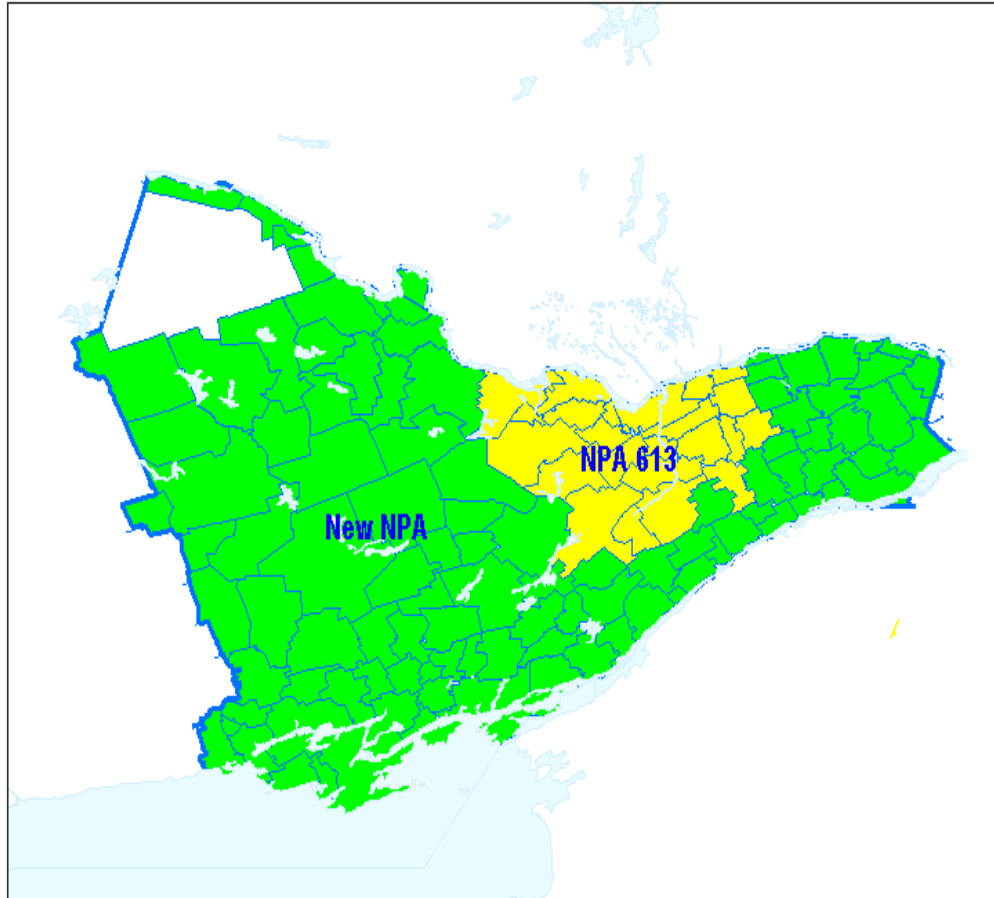


Figure 7 - Plan 1a: Ottawa (24 Exchange Areas) Split Option – Ottawa retains NPA 613

Ottawa (24 Exchange Areas) consist of the following Exchange Areas:

- | | | | |
|----|--------------------|----|--------------|
| 1 | Almonte | 13 | Merrickville |
| 2 | Arnprior | 14 | Metcalfe |
| 3 | Carleton Place | 15 | Navan |
| 4 | Carp | 16 | North Gower |
| 5 | Constance Bay | 17 | Orleans |
| 6 | Cumberland | 18 | Osgoode |
| 7 | Embrun | 19 | Ottawa-Hull |
| 8 | Gloucester | 20 | Pakenham |
| 9 | Jockvale | 21 | Richmond |
| 10 | Kanata-Stittsville | 22 | Russell |
| 11 | Kemptville | 23 | Smiths Falls |
| 12 | Manotick | 24 | Winchester |

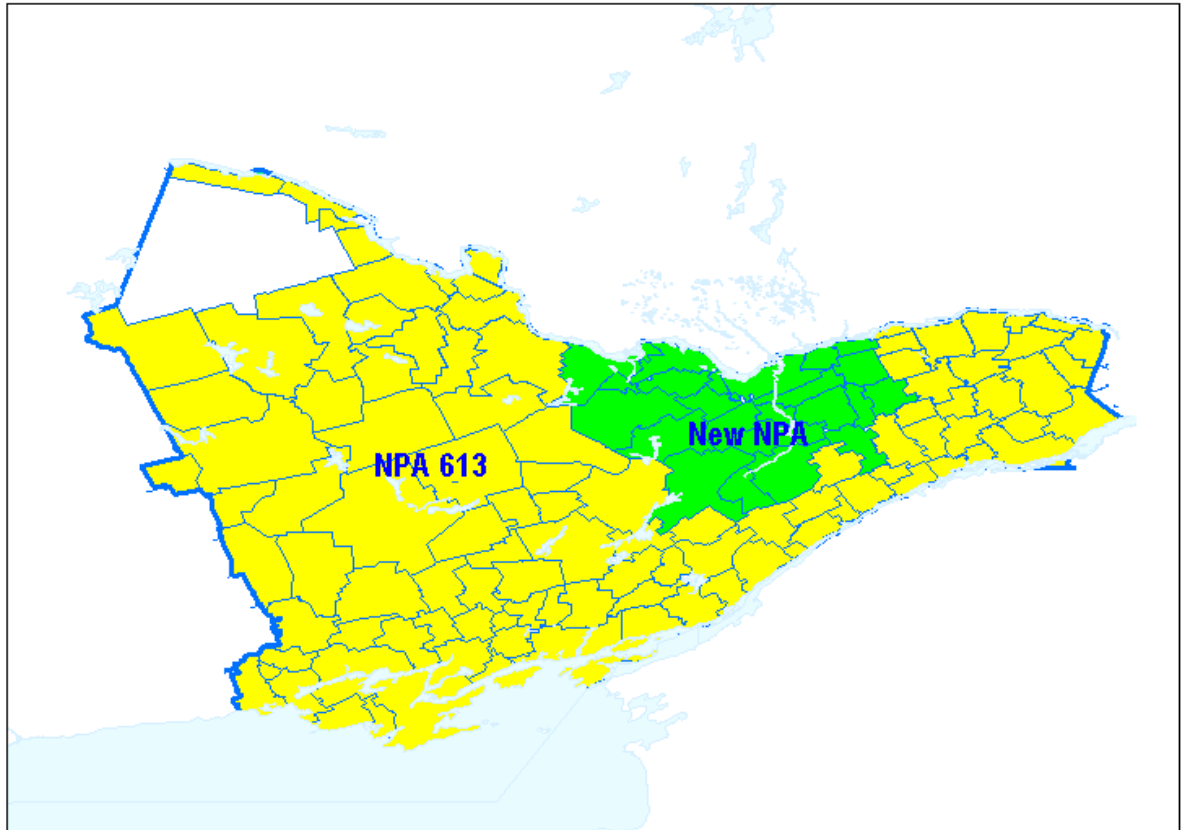


Figure 8 - Plan 1b: Ottawa (24 Exchange Areas) Split Option – Ottawa changes to New NPA

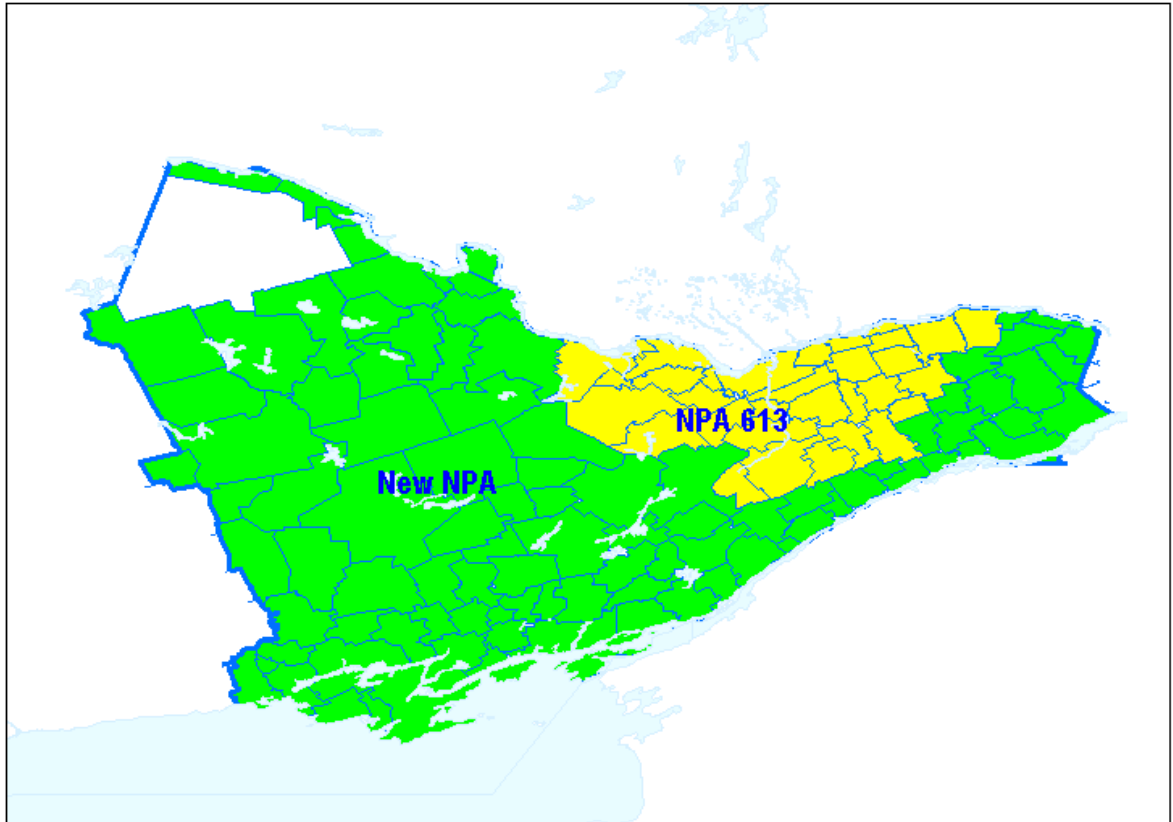


Figure 9 - Plan 2a: Ottawa LIR Split Option - Ottawa LIR Region retains NPA 613

Ottawa LIR includes the following Exchange Areas:

- | | | | |
|----|--------------------|----|----------------|
| 1 | Alfred | 17 | Kemptville |
| 2 | Almonte | 18 | Manotick |
| 3 | Arnprior | 19 | Merrickville |
| 4 | Bourget | 20 | Metcalfe |
| 5 | Carleton Place | 21 | Navan |
| 6 | Carp | 22 | North Gower |
| 7 | Casselman | 23 | Orleans |
| 8 | Chesterville | 24 | Osgoode |
| 9 | Clarence Creek | 25 | Ottawa-Hull |
| 10 | Constance Bay | 26 | Pakenham |
| 11 | Crysler | 27 | Plantagenet |
| 12 | Cumberland | 28 | Richmond |
| 13 | Embrun | 29 | Rockland |
| 14 | Gloucester | 30 | Russell |
| 15 | Jockvale | 31 | South Mountain |
| 16 | Kanata-Stittsville | 32 | Winchester |

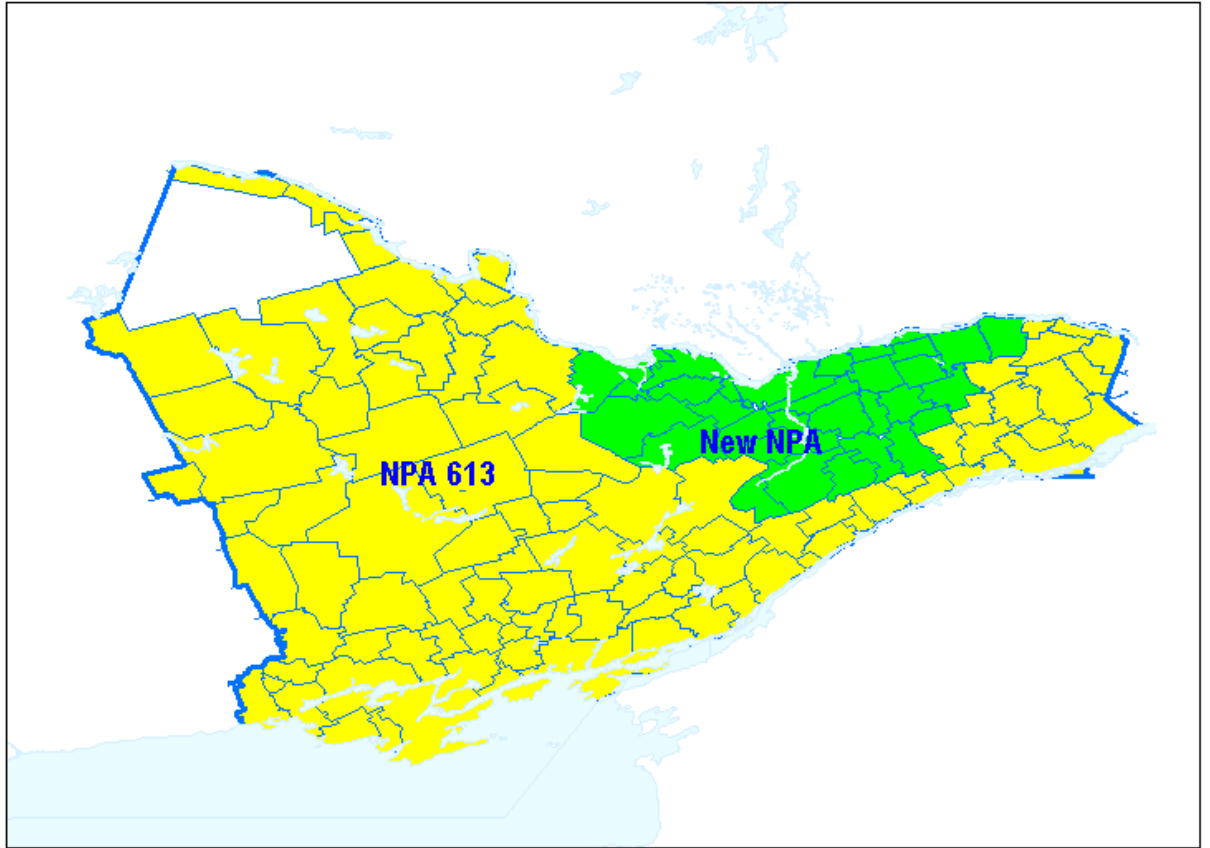


Figure 10 - Plan 2b: Ottawa LIR Split Option - Ottawa LIR Region changes to New NPA

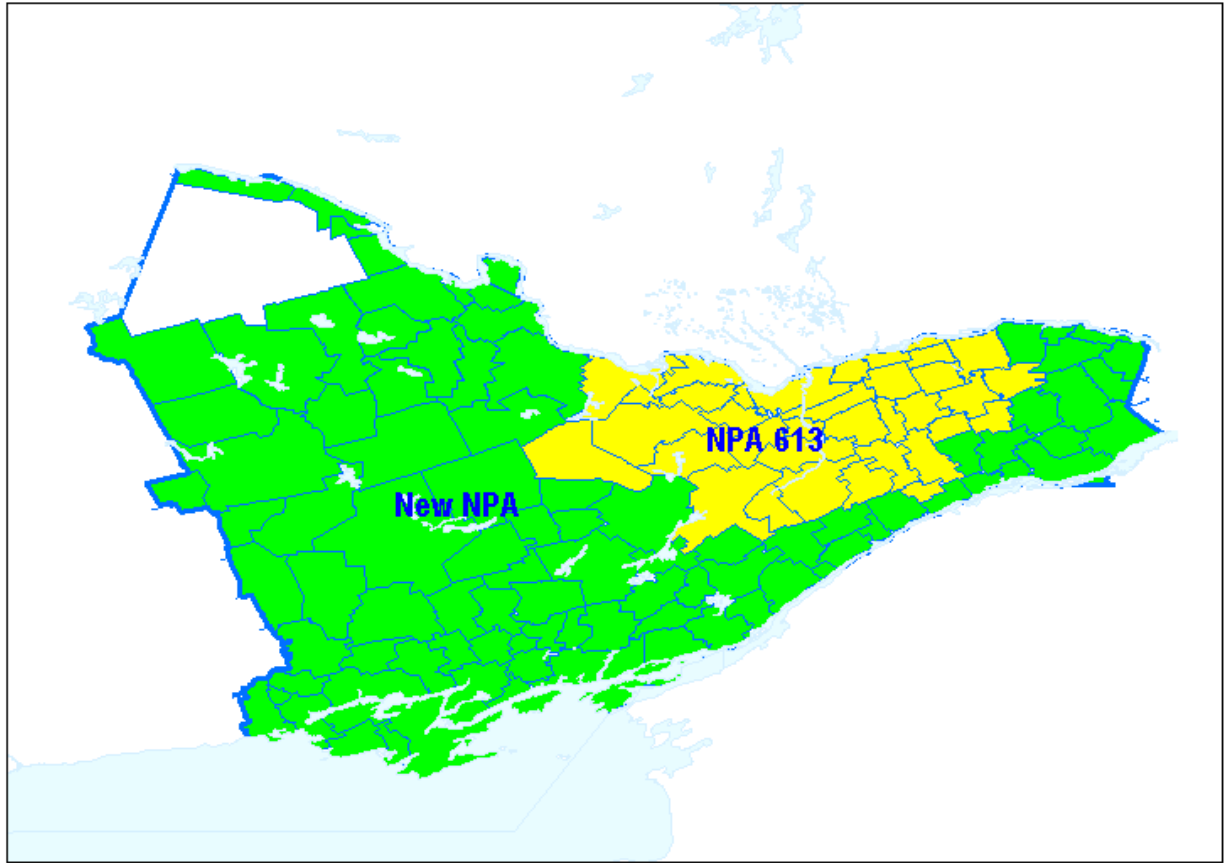


Figure 11 - Plan 3a: Ottawa Exchange EAS Area Split Option - Ottawa Exchange EAS Area retains NPA 613

Ottawa Exchange EAS Area includes the following Exchange Areas:

- | | | | | | |
|----|----------------|----|--------------------|----|----------------|
| 1 | Almonte | 13 | Gloucester | 25 | Osgoode |
| 2 | Arnprior | 14 | Jockvale | 26 | Ottawa-Hull |
| 3 | Bourget | 15 | Kanata-Stittsville | 27 | Pakenham |
| 4 | Carleton Place | 16 | Kemptville | 28 | Plantagenet |
| 5 | Carp | 17 | Lanark | 29 | Richmond |
| 6 | Casselman | 18 | Manotick | 30 | Rockland |
| 7 | Chesterville | 19 | Merrickville | 31 | Russell |
| 8 | Clarence Creek | 20 | Metcalfe | 32 | Smiths Falls |
| 9 | Constance Bay | 21 | Moose Creek | 33 | South Mountain |
| 10 | Crysler | 22 | Navan | 34 | St. Isidore |
| 11 | Cumberland | 23 | North Gower | 35 | Williamsburg |
| 12 | Embrun | 24 | Orleans | 36 | Winchester |

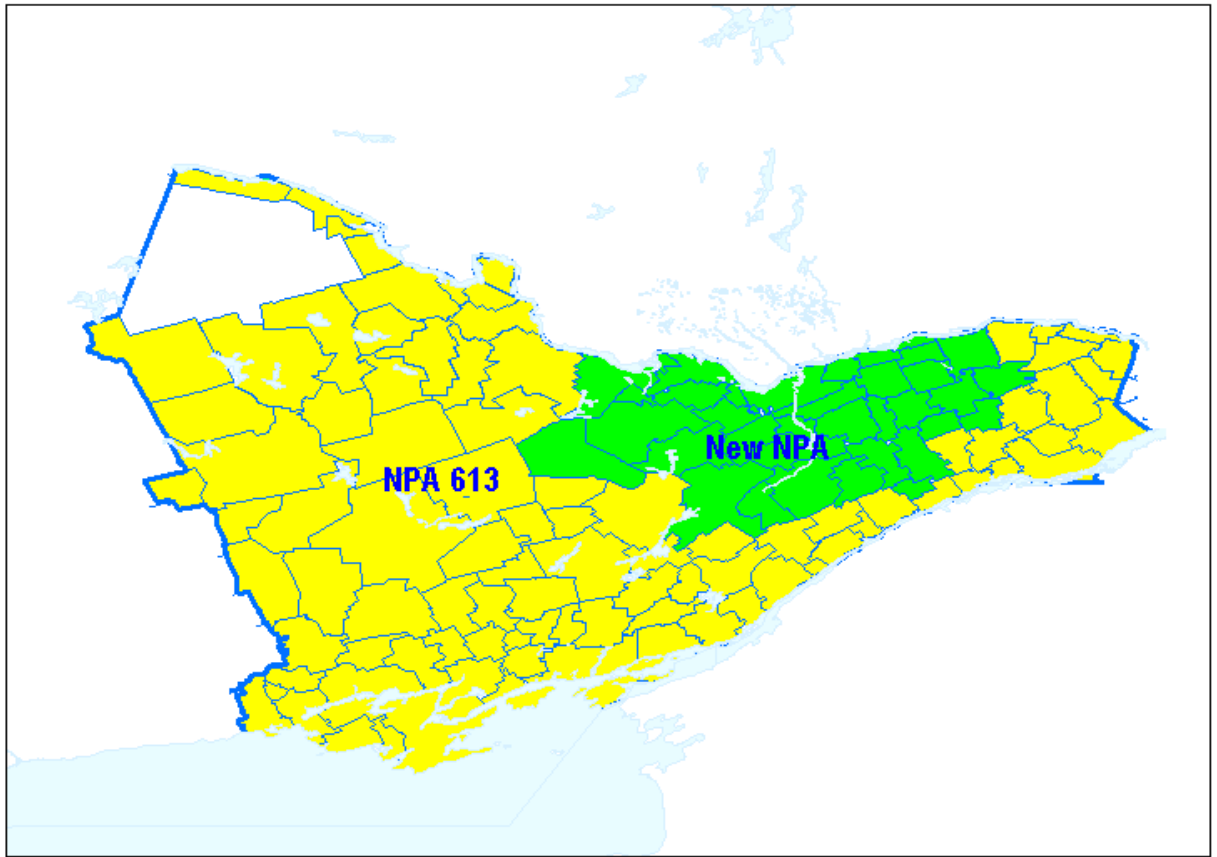


Figure 12 - Plan 3b: Ottawa Exchange EAS Area Split Option - Ottawa Exchange EAS Area changes to New NPA

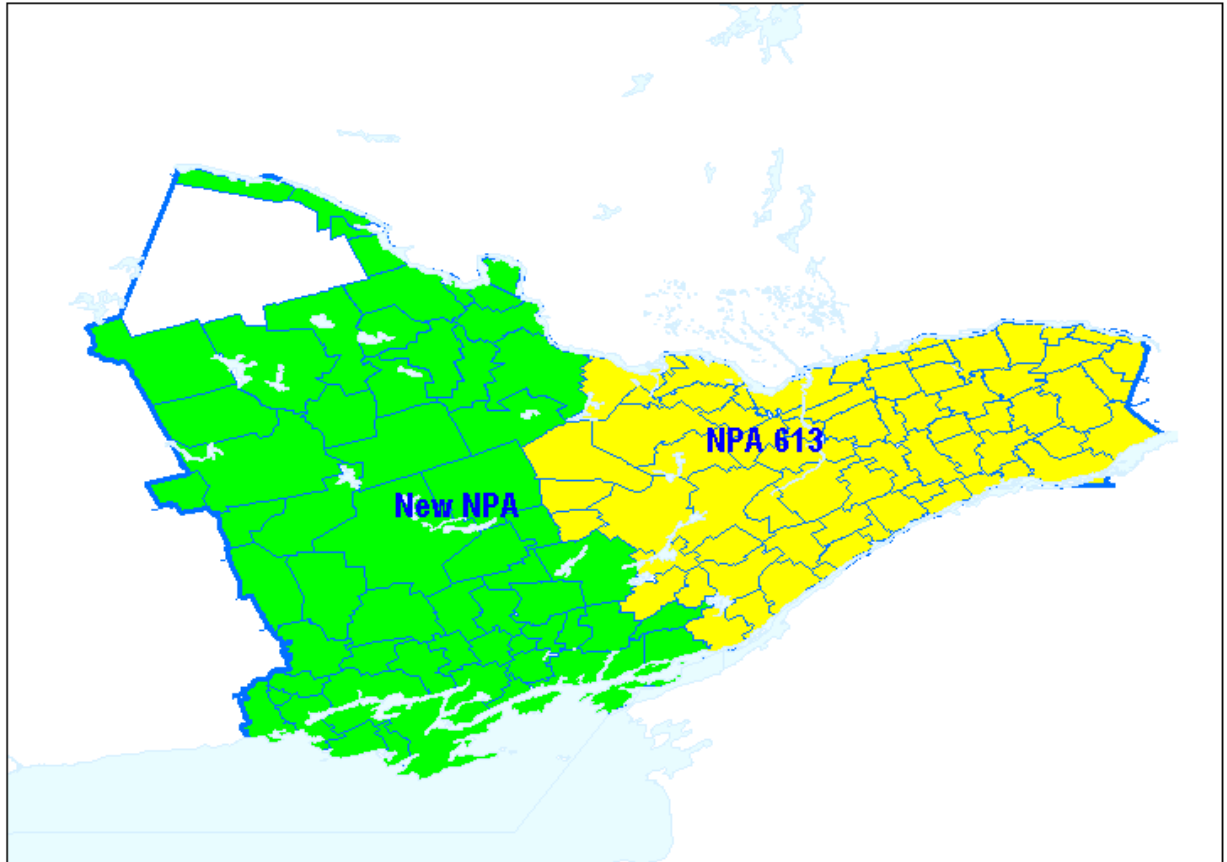


Figure 13 - Plan 4a: East/West Split Option – Eastern Region retains NPA 613

The Eastern Region Consists of the following Exchange Areas:

- | | | | |
|-------------------|-----------------------|----------------------|-------------------|
| 1 Alexandria | 19 Delta | 37 Maitland | 55 Plantagenet |
| 2 Alfred | 20 Elgin | 38 Mallorytown | 56 Portland |
| 3 Almonte | 21 Embrun | 39 Manotick | 57 Prescott |
| 4 Arnprior | 22 Finch | 40 Martintown | 58 Richmond |
| 5 Athens | 23 Glen Robertson | 41 Maxville | 59 Rockland |
| 6 Avonmore | 24 Gloucester | 42 McDonalds Corners | 60 Russell |
| 7 Bourget | 25 Hawkesbury | 43 Merrickville | 61 Smiths Falls |
| 8 Brockville | 26 Ingleside | 44 Metcalfe | 62 South Mountain |
| 9 Cardinal | 27 Iroquois | 45 Moose Creek | 63 Spencerville |
| 10 Carleton Place | 28 Jockvale | 46 Morrisburg | 64 St. Eugene |
| 11 Carp | 29 Kanata-Stittsville | 47 Navan | 65 St. Isidore |
| 12 Casselman | 30 Kemptville | 48 North Augusta | 66 St. Regis |
| 13 Chesterville | 31 L'Orignal | 49 North Gower | 67 Toledo |
| 14 Clarence Creek | 32 Lanark | 50 Orleans | 68 Vankleek Hill |
| 15 Constance Bay | 33 Lancaster | 51 Osgoode | 69 Williamsburg |
| 16 Cornwall | 34 Lansdowne | 52 Ottawa-Hull | 70 Winchester |
| 17 Crysler | 35 Long Sault | 53 Pakenham | |
| 18 Cumberland | 36 Maberly | 54 Perth | |

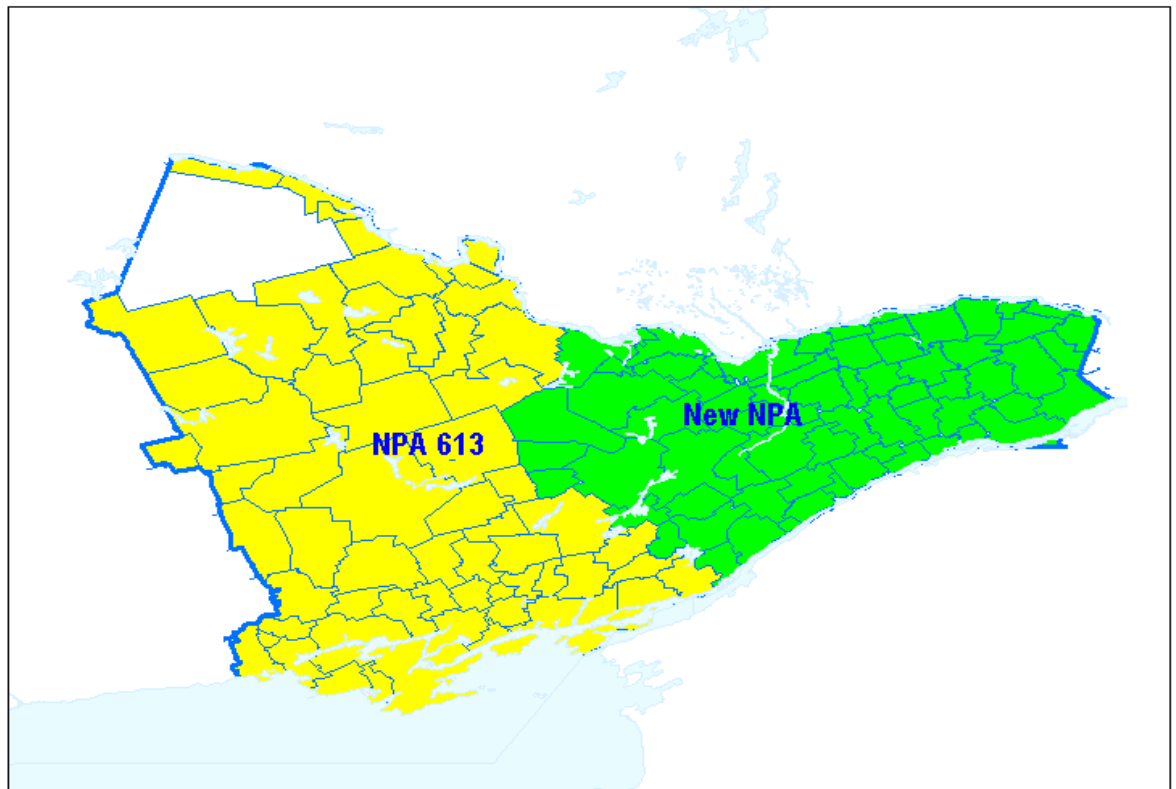


Figure 14 - Plan 4b: East/West Split Option – Eastern Region changes to New NPA

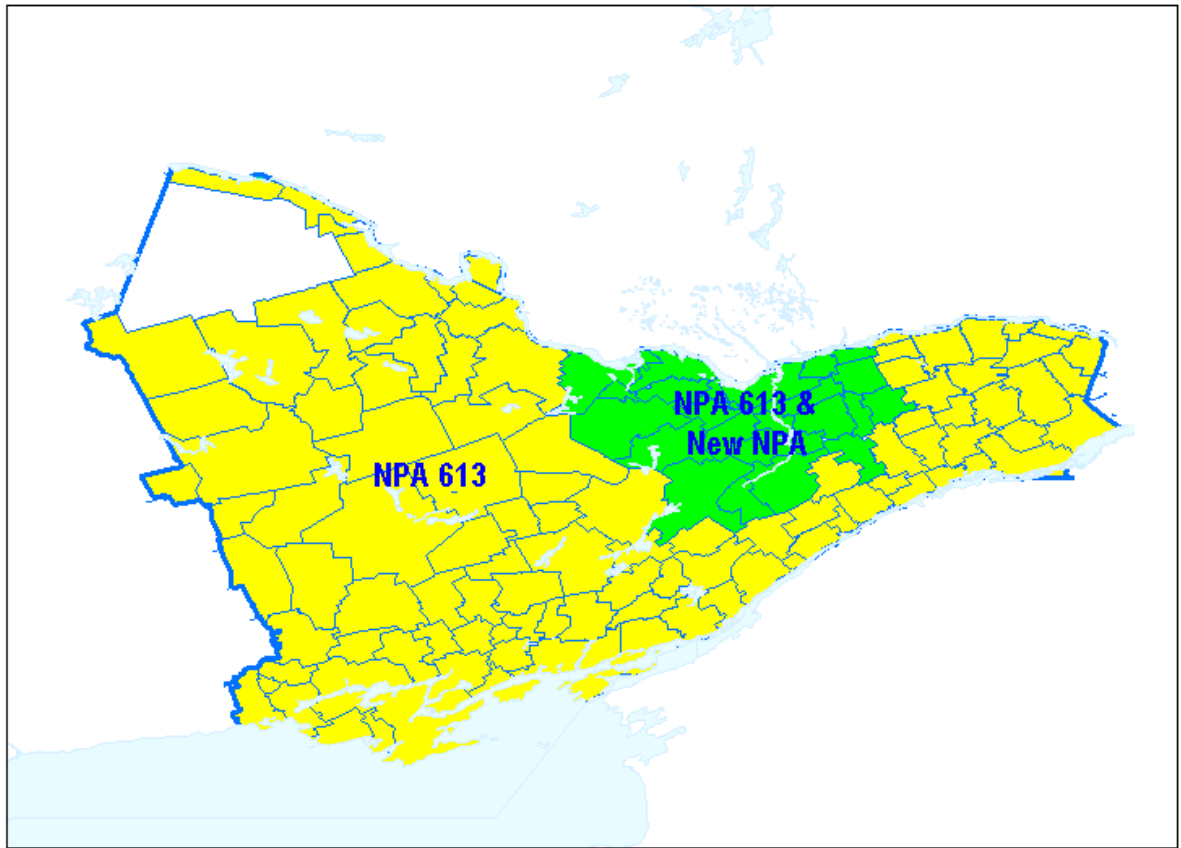


Figure 15 - Plan 5: Concentrated Overlay of New NPA on Ottawa (24 Exchange Areas)

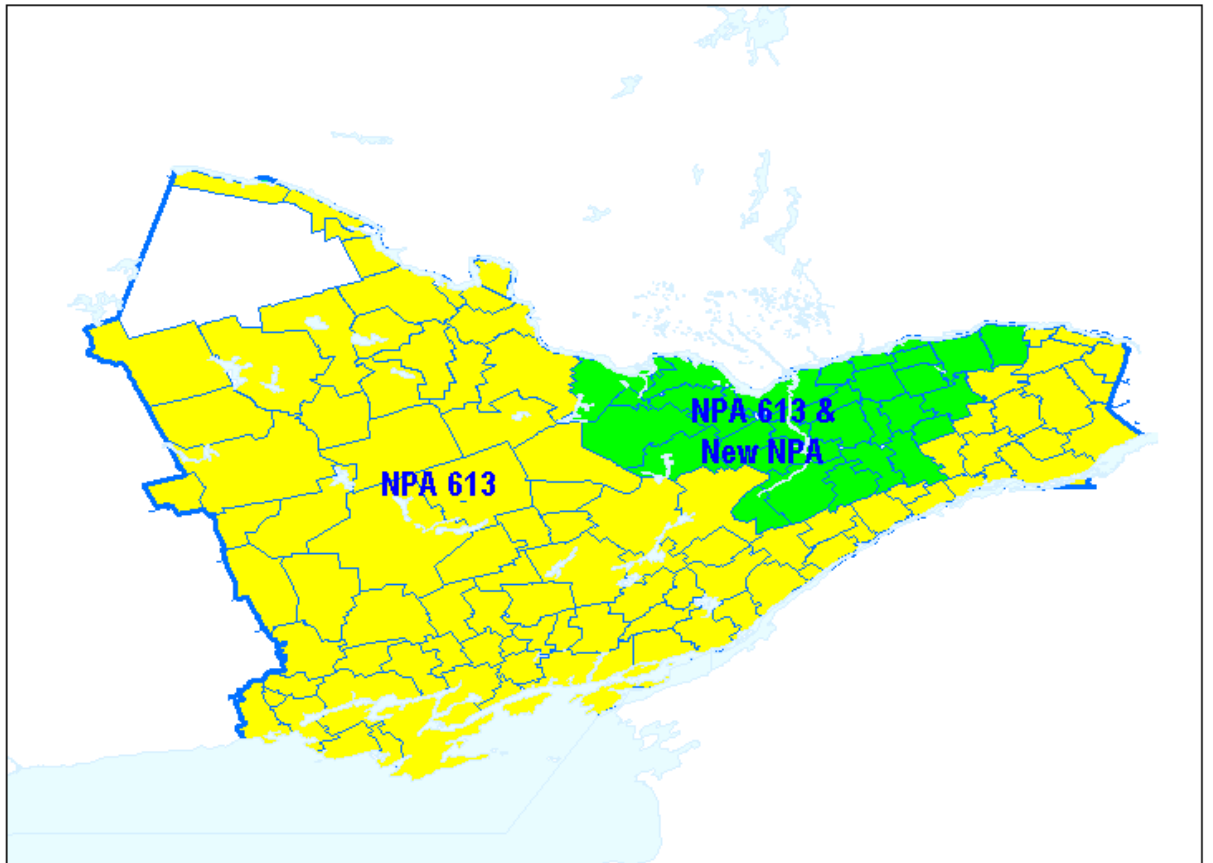


Figure 16 – Plan 6: Concentrated Overlay of New NPA on the Ottawa LIR

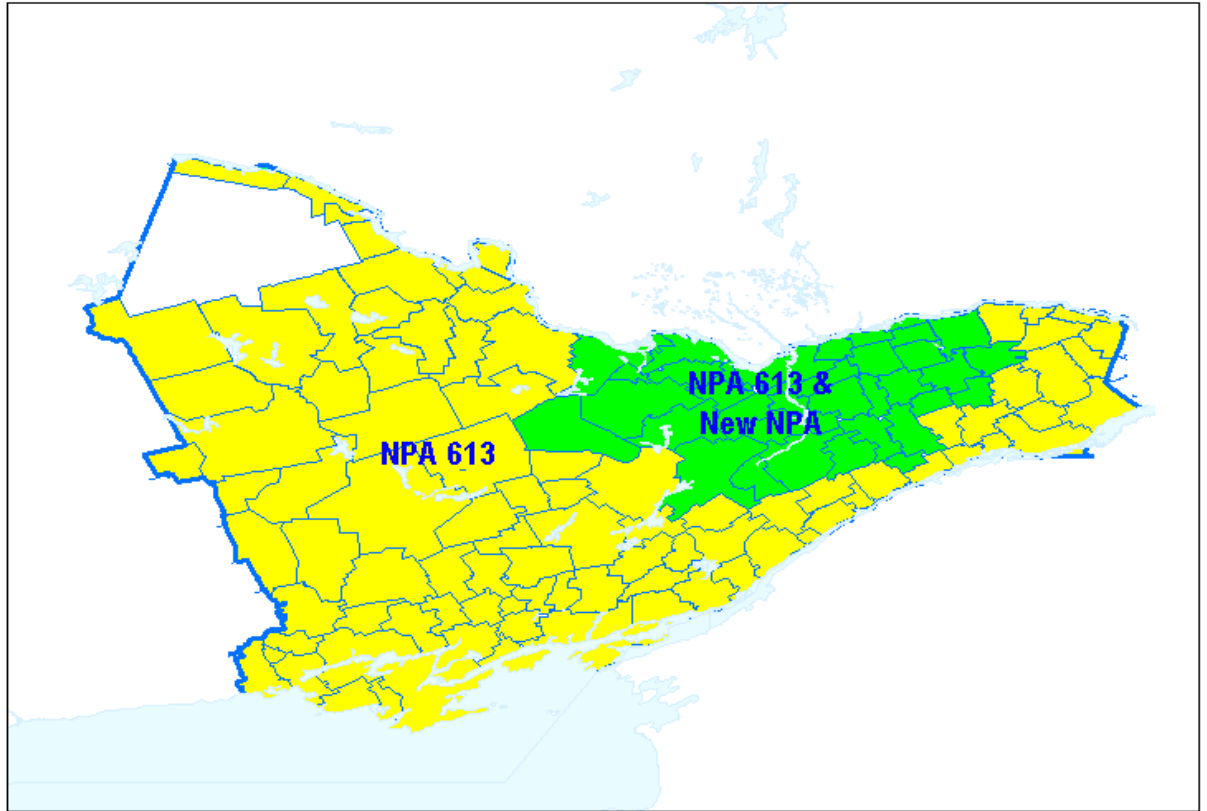


Figure 17- Plan 7: Concentrated Overlay of New NPA on the Ottawa Exchange EAS Area

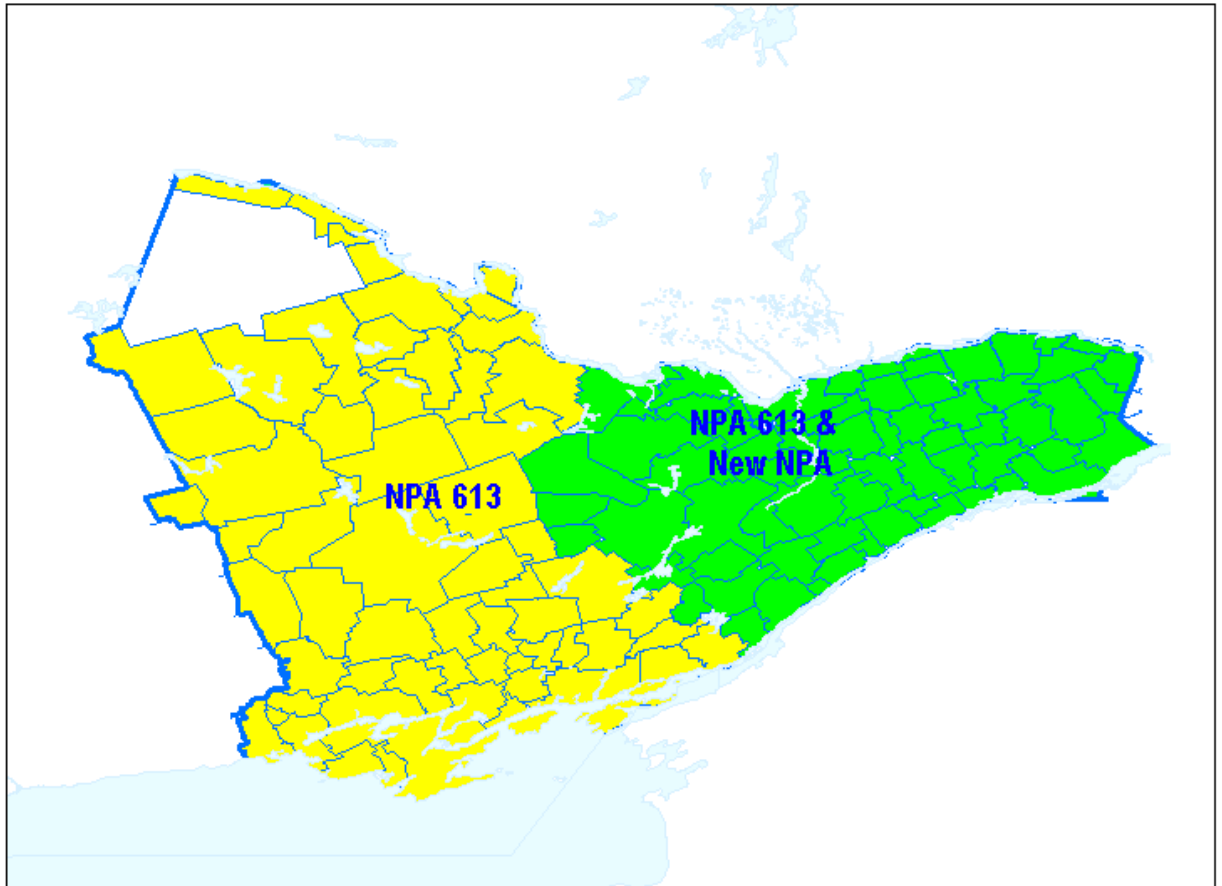


Figure 18 – Plan 8: Concentrated Overlay of New NPA on the Eastern Region

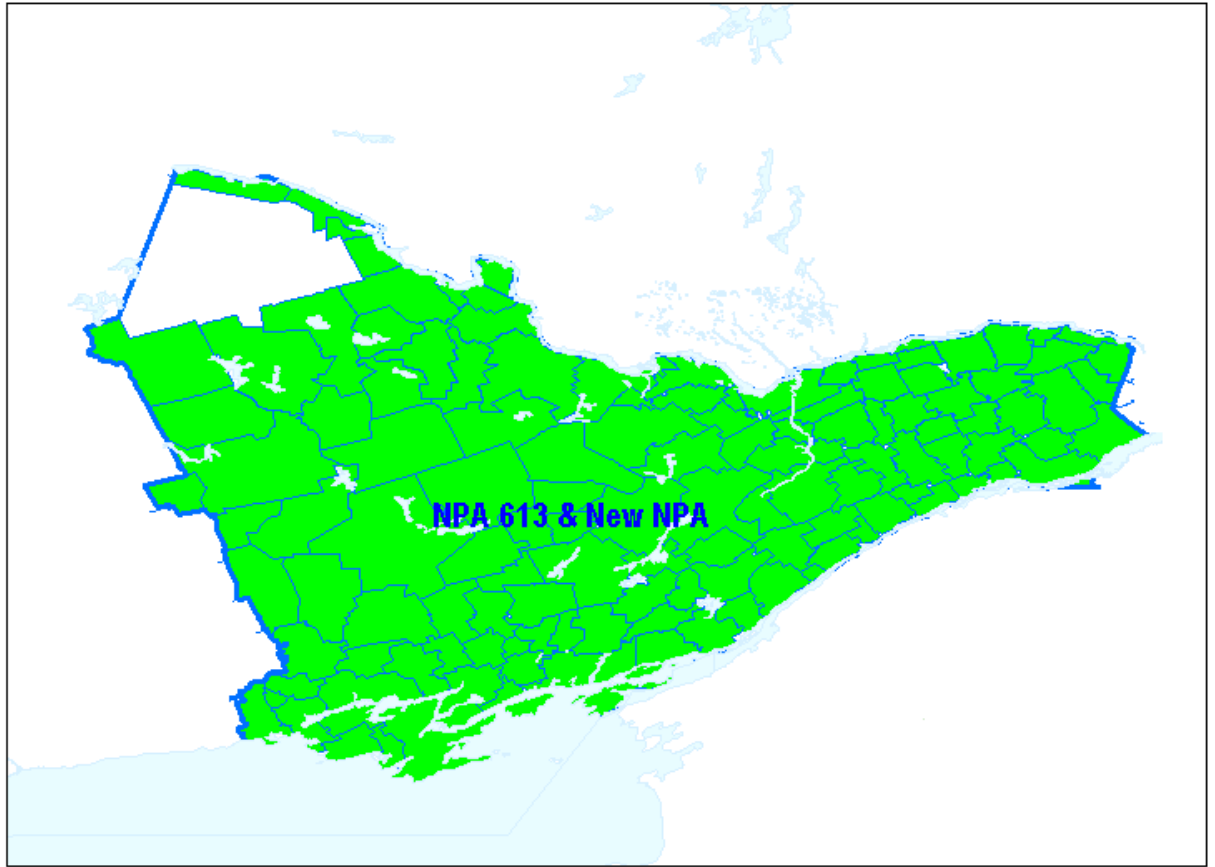


Figure 19 – Plan 9: Distributed Overlay of New NPA on NPA 613

For a list of all Exchange Areas in Plan 9, see Annex A, Table 1.

Table 1 – Exchange Areas currently in NPA 613, and New NPA for these Exchange Areas after each Relief Plan

Exchange	1a		1b		2a		2b		3a		3b		4a		4b	
	New	613	New	613	New	613	New	613	New	613	New	613	New	613	New	613
ADOLPHUSTN	✓			✓	✓			✓	✓			✓	✓			✓
ALEXANDRIA	✓			✓	✓			✓	✓			✓		✓	✓	
ALFRED	✓			✓		✓	✓		✓			✓		✓	✓	
ALMONTE		✓	✓			✓	✓			✓	✓			✓	✓	
ARDEN	✓			✓	✓			✓	✓			✓	✓			✓
ARNPRIOR		✓	✓			✓	✓			✓	✓			✓	✓	
ATHENS	✓			✓	✓			✓	✓			✓		✓	✓	
AVONMORE	✓			✓	✓			✓	✓			✓		✓	✓	
BANCROFT	✓			✓	✓			✓	✓			✓	✓			✓
BARRYS BAY	✓			✓	✓			✓	✓			✓	✓			✓
BATH	✓			✓	✓			✓	✓			✓	✓			✓
BEACHBURG	✓			✓	✓			✓	✓			✓	✓			✓
BELLEVILLE	✓			✓	✓			✓	✓			✓	✓			✓
BLOOMFIELD	✓			✓	✓			✓	✓			✓	✓			✓
BOURGET	✓			✓		✓	✓			✓	✓			✓	✓	
BRIGHTON	✓			✓	✓			✓	✓			✓	✓			✓
BROCKVILLE	✓			✓	✓			✓	✓			✓		✓	✓	
CALABOGIE	✓			✓	✓			✓	✓			✓	✓			✓
CARDIFF	✓			✓	✓			✓	✓			✓	✓			✓
CARDINAL	✓			✓	✓			✓	✓			✓		✓	✓	
CARLETONPL		✓	✓			✓	✓			✓	✓			✓	✓	
CARP		✓	✓			✓	✓			✓	✓			✓	✓	
CASSELMAN	✓			✓		✓	✓			✓	✓			✓	✓	
CHALKRIVER	✓			✓	✓			✓	✓			✓	✓			✓
CHESTERVL	✓			✓		✓	✓			✓	✓			✓	✓	
CLARENCCRK	✓			✓		✓	✓			✓	✓			✓	✓	
COBDEN	✓			✓	✓			✓	✓			✓	✓			✓
COE HILL	✓			✓	✓			✓	✓			✓	✓			✓
CONSTANCBY		✓	✓			✓	✓			✓	✓			✓	✓	
CORNWALL	✓			✓	✓			✓	✓			✓		✓	✓	
CRYSLER	✓			✓		✓	✓			✓	✓			✓	✓	
CUMBERLAND		✓	✓			✓	✓			✓	✓			✓	✓	
DEEP RIVER	✓			✓	✓			✓	✓			✓	✓			✓
DELTA	✓			✓	✓			✓	✓			✓		✓	✓	
DENBIGH	✓			✓	✓			✓	✓			✓	✓			✓
DESERONTO	✓			✓	✓			✓	✓			✓	✓			✓
DOUGLAS	✓			✓	✓			✓	✓			✓	✓			✓
EGANVILLE	✓			✓	✓			✓	✓			✓	✓			✓
ELGIN	✓			✓	✓			✓	✓			✓		✓	✓	
EMBRUN		✓	✓			✓	✓			✓	✓			✓	✓	
ENTERPRISE	✓			✓	✓			✓	✓			✓	✓			✓
FINCH	✓			✓	✓			✓	✓			✓		✓	✓	

Plan -->	1a		1b		2a		2b		3a		3b		4a		4b	
	New	613	New	613	New	613	New	613	New	613	New	613	New	613	New	613
FOYMOUNT	✓			✓	✓			✓	✓			✓	✓			✓
FRANKFORD	✓			✓	✓			✓	✓			✓	✓			✓
GANANOQUE	✓			✓	✓			✓	✓			✓	✓			✓
GILMOUR	✓			✓	✓			✓	✓			✓	✓			✓
GLENRBRTSN	✓			✓	✓			✓	✓			✓		✓	✓	
GLOUCESTER		✓	✓			✓	✓			✓	✓			✓	✓	
GOLDENLAKE	✓			✓	✓			✓	✓			✓	✓			✓
HARROWSMTH	✓			✓	✓			✓	✓			✓	✓			✓
HAWKESBURY	✓			✓	✓			✓	✓			✓		✓	✓	
INGLESIDE	✓			✓	✓			✓	✓			✓		✓	✓	
INVERARY	✓			✓	✓			✓	✓			✓	✓			✓
IROQUOIS	✓			✓	✓			✓	✓			✓		✓	✓	
JOCKVALE		✓	✓			✓	✓			✓	✓			✓	✓	
KANATA SSVL		✓	✓			✓	✓			✓	✓			✓	✓	
KEMPTVILLE		✓	✓			✓	✓			✓	✓			✓	✓	
KILLALOE	✓			✓	✓			✓	✓			✓	✓			✓
KINGSTON	✓			✓	✓			✓	✓			✓	✓			✓
L ORIGNAL	✓			✓	✓			✓	✓			✓		✓	✓	
LANARK	✓			✓	✓			✓		✓	✓			✓	✓	
LANCASTER	✓			✓	✓			✓	✓			✓		✓	✓	
LANSDOWNE	✓			✓	✓			✓	✓			✓		✓	✓	
LONG SAULT	✓			✓	✓			✓	✓			✓		✓	✓	
MABERLY	✓			✓	✓			✓	✓			✓		✓	✓	
MADOC	✓			✓	✓			✓	✓			✓	✓			✓
MAITLAND	✓			✓	✓			✓	✓			✓		✓	✓	
MALLORYTN	✓			✓	✓			✓	✓			✓		✓	✓	
MANOTICK		✓	✓			✓	✓			✓	✓			✓	✓	
MARMORA	✓			✓	✓			✓	✓			✓	✓			✓
MARTINTOWN	✓			✓	✓			✓	✓			✓		✓	✓	
MAXVILLE	✓			✓	✓			✓	✓			✓		✓	✓	
MAYNOOTH	✓			✓	✓			✓	✓			✓	✓			✓
MCDONASCOR	✓			✓	✓			✓	✓			✓		✓	✓	
MERRICKVL		✓	✓			✓	✓			✓	✓			✓	✓	
METCALFE		✓	✓			✓	✓			✓	✓			✓	✓	
MOSECREEK	✓			✓	✓			✓		✓	✓			✓	✓	
MORRISBURG	✓			✓	✓			✓	✓			✓		✓	✓	
NAPANEE	✓			✓	✓			✓	✓			✓	✓			✓
NAVAN		✓	✓			✓	✓			✓	✓			✓	✓	
NEWBURGH	✓			✓	✓			✓	✓			✓	✓			✓
NO AUGUSTA	✓			✓	✓			✓	✓			✓		✓	✓	
NORTHBROOK	✓			✓	✓			✓	✓			✓	✓			✓
NORTHGOWER		✓	✓			✓	✓			✓	✓			✓	✓	
ODESSA	✓			✓	✓			✓	✓			✓	✓			✓
ORLEANS		✓	✓			✓	✓			✓	✓			✓	✓	
OSGOODE		✓	✓			✓	✓			✓	✓			✓	✓	
OTTAWAHULL		✓	✓			✓	✓			✓	✓			✓	✓	

Exchange	1a		1b		2a		2b		3a		3b		4a		4b	
	New	613	New	613	New	613	New	613	New	613	New	613	New	613	New	613
PAKENHAM		✓	✓			✓	✓			✓	✓			✓	✓	
PALMER RPD	✓			✓	✓			✓	✓			✓	✓			✓
PARHAM	✓			✓	✓			✓	✓			✓	✓			✓
PEMBROKE	✓			✓	✓			✓	✓			✓	✓			✓
PEMBROKE INDEPENDENT	✓			✓	✓			✓	✓			✓	✓			✓
PERTH	✓			✓	✓			✓	✓			✓		✓	✓	
PETAWAWA	✓			✓	✓			✓	✓			✓	✓			✓
PICTON	✓			✓	✓			✓	✓			✓	✓			✓
PLANTAGNET	✓			✓		✓	✓			✓	✓			✓	✓	
PLEVNA	✓			✓	✓			✓	✓			✓	✓			✓
PORTLAND	✓			✓	✓			✓	✓			✓		✓	✓	
PRESCOTT	✓			✓	✓			✓	✓			✓		✓	✓	
RENFREW	✓			✓	✓			✓	✓			✓	✓			✓
RICHMOND		✓	✓			✓	✓			✓	✓			✓	✓	
ROCKLAND	✓			✓		✓	✓			✓	✓			✓	✓	
ROLPHTON	✓			✓	✓			✓	✓			✓	✓			✓
RUSSELL		✓	✓			✓	✓			✓	✓			✓	✓	
SEELEYSBAY	✓			✓	✓			✓	✓			✓	✓			✓
SELBY	✓			✓	✓			✓	✓			✓	✓			✓
SHARBOT LK	✓			✓	✓			✓	✓			✓	✓			✓
SMITHS FLS		✓	✓		✓			✓		✓	✓			✓	✓	
SOUTH MT	✓			✓		✓	✓			✓	✓			✓	✓	
SPENCERVL	✓			✓	✓			✓	✓			✓		✓	✓	
ST EUGENE	✓			✓	✓			✓	✓			✓		✓	✓	
ST ISIDORE	✓			✓	✓			✓		✓	✓			✓	✓	
ST REGIS	✓			✓	✓			✓	✓			✓		✓	✓	
STIRLING	✓			✓	✓			✓	✓			✓	✓			✓
SYDENHAM	✓			✓	✓			✓	✓			✓	✓			✓
TAMWORTH	✓			✓	✓			✓	✓			✓	✓			✓
THURLOW	✓			✓	✓			✓	✓			✓	✓			✓
TOLEDO	✓			✓	✓			✓	✓			✓		✓	✓	
TRENTON	✓			✓	✓			✓	✓			✓	✓			✓
TWEED	✓			✓	✓			✓	✓			✓	✓			✓
VANKLEEKHL	✓			✓	✓			✓	✓			✓		✓	✓	
VERONA	✓			✓	✓			✓	✓			✓	✓			✓
WELLINGTON	✓			✓	✓			✓	✓			✓	✓			✓
WESTMEATH	✓			✓	✓			✓	✓			✓	✓			✓
WESTPORT	✓			✓	✓			✓	✓			✓	✓			✓
WHITNEY	✓			✓	✓			✓	✓			✓	✓			✓
WILLIAMSBG	✓			✓	✓			✓		✓	✓			✓	✓	
WINCHESTER		✓	✓			✓	✓			✓	✓			✓	✓	
WOLFE IS	✓			✓	✓			✓	✓			✓	✓			✓
WOOLER	✓			✓	✓			✓	✓			✓	✓			✓
YARKER	✓			✓	✓			✓	✓			✓	✓			✓

Exchange	5		6		7		8		9
	New & 613	613	New & 613	613	New & 613	613	New & 613	613	New & 613
ADOLPHUSTN		✓		✓		✓		✓	✓
ALEXANDRIA		✓		✓		✓	✓	✓	✓
ALFRED		✓	✓	✓		✓	✓	✓	✓
ALMONTE	✓	✓	✓	✓	✓	✓	✓	✓	✓
ARDEN		✓		✓		✓		✓	✓
ARNPRIOR	✓	✓	✓	✓	✓	✓	✓	✓	✓
ATHENS		✓		✓		✓	✓	✓	✓
AVONMORE		✓		✓		✓	✓	✓	✓
BANCROFT		✓		✓		✓		✓	✓
BARRYS BAY		✓		✓		✓		✓	✓
BATH		✓		✓		✓		✓	✓
BEACHBURG		✓		✓		✓		✓	✓
BELLEVILLE		✓		✓		✓		✓	✓
BLOOMFIELD		✓		✓		✓		✓	✓
BOURGET		✓	✓	✓	✓	✓	✓	✓	✓
BRIGHTON		✓		✓		✓		✓	✓
BROCKVILLE		✓		✓		✓	✓	✓	✓
CALABOGIE		✓		✓		✓		✓	✓
CARDIFF		✓		✓		✓		✓	✓
CARDINAL		✓		✓		✓	✓	✓	✓
CARLETONPL	✓	✓	✓	✓	✓	✓	✓	✓	✓
CARP	✓	✓	✓	✓	✓	✓	✓	✓	✓
CASSELMAN		✓	✓	✓	✓	✓	✓	✓	✓
CHALKRIVER		✓		✓		✓		✓	✓
CHESTERVL		✓	✓	✓	✓	✓	✓	✓	✓
CLARENCCRK		✓	✓	✓	✓	✓	✓	✓	✓
COBDEN		✓		✓		✓		✓	✓
COE HILL		✓		✓		✓		✓	✓
CONSTANCBY	✓	✓	✓	✓	✓	✓	✓	✓	✓
CORNWALL		✓		✓		✓	✓	✓	✓
CRYSLER		✓	✓	✓	✓	✓	✓	✓	✓
CUMBERLAND	✓	✓	✓	✓	✓	✓	✓	✓	✓
DEEP RIVER		✓		✓		✓		✓	✓
DELTA		✓		✓		✓	✓	✓	✓
DENBIGH		✓		✓		✓		✓	✓
DESERONTO		✓		✓		✓		✓	✓
DOUGLAS		✓		✓		✓		✓	✓
EGANVILLE		✓		✓		✓		✓	✓
ELGIN		✓		✓		✓	✓	✓	✓
EMBRUN	✓	✓	✓	✓	✓	✓	✓	✓	✓
ENTERPRISE		✓		✓		✓		✓	✓
FINCH		✓		✓		✓	✓	✓	✓
FOYMOUNT		✓		✓		✓		✓	✓
FRANKFORD		✓		✓		✓		✓	✓
GANANOQUE		✓		✓		✓		✓	✓
GILMOUR		✓		✓		✓		✓	✓

Exchange	5		6		7		8		9
	New & 613	613	New & 613	613	New & 613	613	New & 613	613	New & 613
GLENRBRTSN		✓		✓		✓	✓	✓	✓
GLOUCESTER	✓	✓	✓	✓	✓	✓	✓	✓	✓
GOLDENLAKE		✓		✓		✓		✓	✓
HARROWSMTH		✓		✓		✓		✓	✓
HAWKESBURY		✓		✓		✓	✓	✓	✓
INGLESIDE		✓		✓		✓	✓	✓	✓
INVERARY		✓		✓		✓		✓	✓
IROQUOIS		✓		✓		✓	✓	✓	✓
JOCKVALE	✓	✓	✓	✓	✓	✓	✓	✓	✓
KANATA SSVL	✓	✓	✓	✓	✓	✓	✓	✓	✓
KEMPTVILLE	✓	✓	✓	✓	✓	✓	✓	✓	✓
KILLALOE		✓		✓		✓		✓	✓
KINGSTON		✓		✓		✓		✓	✓
L ORIGINAL		✓		✓		✓	✓	✓	✓
LANARK		✓		✓	✓	✓	✓	✓	✓
LANCASTER		✓		✓		✓	✓	✓	✓
LANSDOWNE		✓		✓		✓	✓	✓	✓
LONG SAULT		✓		✓		✓	✓	✓	✓
MABERLY		✓		✓		✓	✓	✓	✓
MADOC		✓		✓		✓		✓	✓
MAITLAND		✓		✓		✓	✓	✓	✓
MALLORYTN		✓		✓		✓	✓	✓	✓
MANOTICK	✓	✓	✓	✓	✓	✓	✓	✓	✓
MARMORA		✓		✓		✓		✓	✓
MARTINTOWN		✓		✓		✓	✓	✓	✓
MAXVILLE		✓		✓		✓	✓	✓	✓
MAYNOOTH		✓		✓		✓		✓	✓
MCDONASCOR		✓		✓		✓	✓	✓	✓
MERRICKVL	✓	✓	✓	✓	✓	✓	✓	✓	✓
METCALFE	✓	✓	✓	✓	✓	✓	✓	✓	✓
MOSECREEK		✓		✓	✓	✓		✓	✓
MORRISBURG		✓		✓		✓	✓	✓	✓
NAPANEE		✓		✓		✓		✓	✓
NAVAN	✓	✓	✓	✓	✓	✓	✓	✓	✓
NEWBURGH		✓		✓		✓		✓	✓
NO AUGUSTA		✓		✓		✓	✓	✓	✓
NORTHBROOK		✓		✓		✓		✓	✓
NORTHGOWER	✓	✓	✓	✓	✓	✓	✓	✓	✓
ODESSA		✓		✓		✓		✓	✓
ORLEANS	✓	✓	✓	✓	✓	✓	✓	✓	✓
OSGOODE	✓	✓	✓	✓	✓	✓	✓	✓	✓
OTTAWAHULL	✓	✓	✓	✓	✓	✓	✓	✓	✓
PAKENHAM	✓	✓	✓	✓	✓	✓	✓	✓	✓
PALMER RPD		✓		✓		✓		✓	✓
PARHAM		✓		✓		✓		✓	✓
PEMBROKE		✓		✓		✓		✓	✓

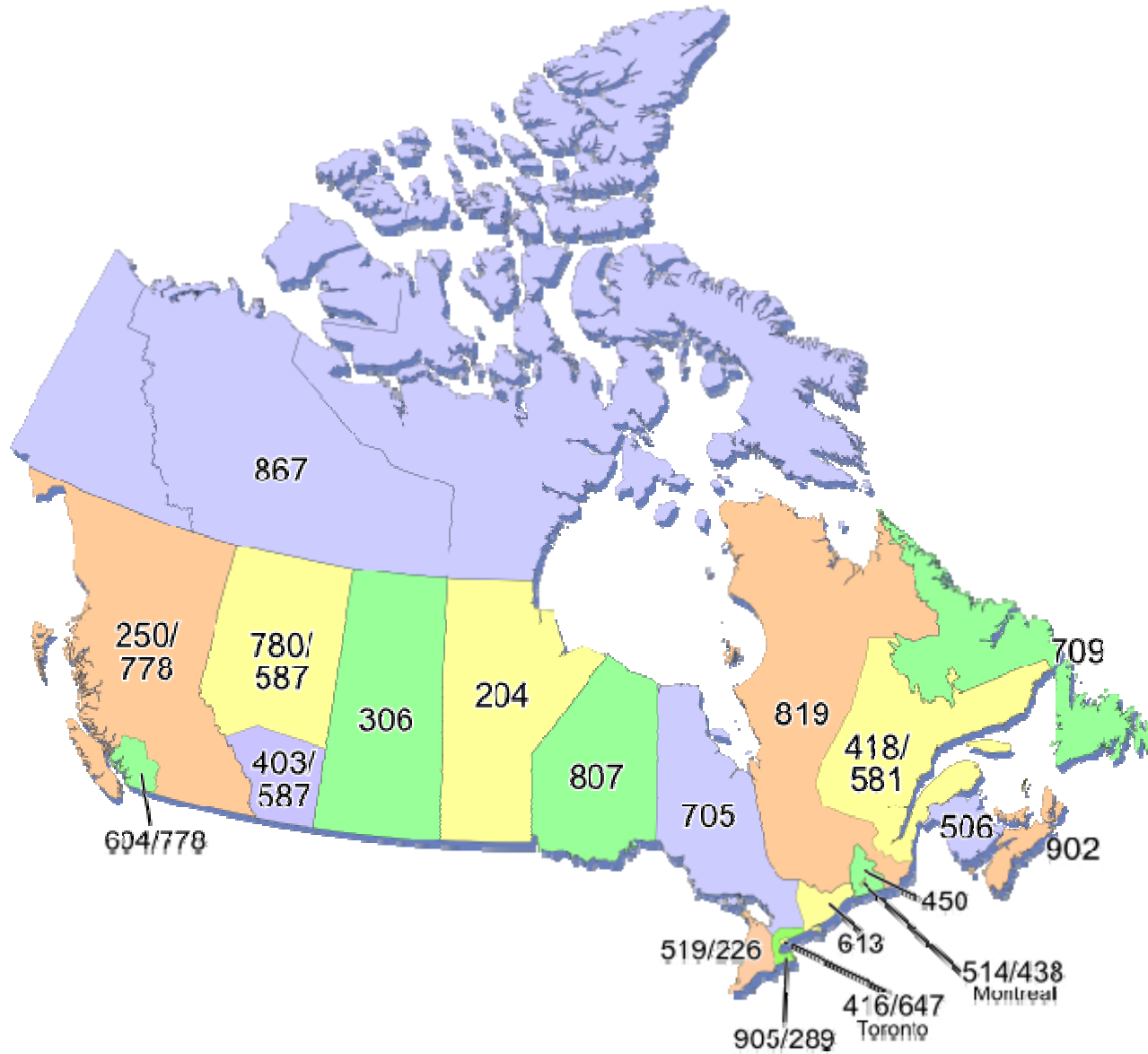
Plan -->	5		6		7		8		9
Exchange	New & 613	613	New & 613	613	New & 613	613	New & 613	613	New & 613
PEMBROKE		✓		✓		✓		✓	✓
INDEPENDENT									
PERTH		✓		✓		✓	✓	✓	✓
PETAWAWA		✓		✓		✓		✓	✓
PICTON		✓		✓		✓		✓	✓
PLANTAGNET		✓	✓	✓	✓	✓	✓	✓	✓
PLEVNA		✓		✓		✓		✓	✓
PORTLAND		✓		✓		✓	✓	✓	✓
PRESCOTT		✓		✓		✓	✓	✓	✓
RENFREW		✓		✓		✓		✓	✓
RICHMOND	✓	✓	✓	✓	✓	✓	✓	✓	✓
ROCKLAND		✓	✓	✓	✓	✓	✓	✓	✓
ROLPHTON		✓		✓		✓		✓	✓
RUSSELL	✓	✓	✓	✓	✓	✓	✓	✓	✓
SEELEYSBAY		✓		✓		✓		✓	✓
SELBY		✓		✓		✓		✓	✓
SHARBOT LK		✓		✓		✓		✓	✓
SMITHS FLS	✓	✓		✓	✓	✓	✓	✓	✓
SOUTH MT		✓	✓	✓	✓	✓	✓	✓	✓
SPENCERVL		✓		✓		✓	✓	✓	✓
ST EUGENE		✓		✓		✓	✓	✓	✓
ST ISIDORE		✓		✓	✓	✓	✓	✓	✓
ST REGIS		✓		✓		✓	✓	✓	✓
STIRLING		✓		✓		✓		✓	✓
SYDENHAM		✓		✓		✓		✓	✓
TAMWORTH		✓		✓		✓		✓	✓
THURLOW		✓		✓		✓		✓	✓
TOLEDO		✓		✓		✓	✓	✓	✓
TRENTON		✓		✓		✓		✓	✓
TWEED		✓		✓		✓		✓	✓
VANKLEEKHL		✓		✓		✓	✓	✓	✓
VERONA		✓		✓		✓		✓	✓
WELLINGTON		✓		✓		✓		✓	✓
WESTMEATH		✓		✓		✓		✓	✓
WESTPORT		✓		✓		✓		✓	✓
WHITNEY		✓		✓		✓		✓	✓
WILLIAMSBG		✓		✓	✓	✓	✓	✓	✓
WINCHESTER	✓	✓	✓	✓	✓	✓	✓	✓	✓
WOLFE IS		✓		✓		✓		✓	✓
WOOLER		✓		✓		✓		✓	✓
YARKER		✓		✓		✓		✓	✓

Table 2 – Status in NPA 613 and Adjacent NPAs of NXXs that correspond to Projected Future Canadian Geographic NPAs

Home NPAs & neighbouring NPAs		NXXs corresponding to NPAs																														Tot			Notes													
		Projected future Canadian NPAs (forecast to be needed for NPAs exhausting within 20 years)																														S	Z	R														
		236	249	257	263	273	343	354	365	367	368	382	387	428	431	437	460	468	474	487	537	548	568	579	584	639	672	683	742	753	825					851	871	873	879	942								
289	ON	Z	Z	S	A	A	Z	A	Z	Z	Z	A	A	S	S	Z	A	S	S	A	A	S	A	A	S	A	A	Z	A	S	A	A	A	A	Z	Z	Z	Z	Z	8	9	0						
450	PO	S	Z	Z	S	Z	Z	Z	Z	S	Z	Z	Z	S	S	S	S	S	Z	S	S	S	Z	S	Z	S	Z	S	S	S	Z	Z	Z	Z	Z	Z	Z	Z	Z	16	19	0						
613	ON	S	S	S	S	S	Z	S	Z	Z	S	S	S	Z	Z	Z	Z	S	S	S	S	Z	Z	S	S	Z	S	S	Z	S	S	Z	Z	Z	Z	Z	Z	Z	Z	19	16	0						
705	ON	S	Z	S	S	S	Z	Z	S	S	S	S	S	S	S	Z	Z	S	S	Z	Z	S	Z	Z	S	S	Z	S	S	Z	Z	Z	Z	Z	S	S	S	21	14	0								
819	PO	Z	Z	Z	S	Z	Z	S	S	S	Z	S	Z	S	Z	S	S	Z	S	S	S	Z	Z	S	S	S	Z	S	S	Z	Z	Z	Z	S	Z	Z	Z	Z	Z	18	17	0						
905	ON	Z	Z	S	S	S	Z	S	Z	Z	Z	S	S	S	S	Z	S	S	S	S	S	S	S	S	S	S	S	Z	S	S	S	S	S	S	S	S	S	Z	26	9	0							
Tot	SA	3	1	4	6	4	0	4	2	2	3	5	4	4	4	3	4	3	6	4	5	5	5	2	4	5	5	4	3	5	5	3	2	2	4	1	126											
	Z	3	5	2	0	2	6	2	4	4	3	1	2	2	2	3	2	3	0	2	1	1	1	4	2	1	1	2	3	1	1	3	4	4	2	5		84										
	R	0	0	0	0	0	0	0	0	0	0	0	0	0	0	0	0	0	0	0	0	0	0	0	0	0	0	0	0	0	0	0	0	0	0	0	0	0			0							
		NXXs in Home NPA that correspond to NPAs in the future Canadian NPA Pool and are designated "Not Available for Assignment"																																														
							343																																									
		NXXs in Home & Neighbouring Cdn NPAs that correspond to NPAs in the future Canadian NPA Pool and are designated "N of Available for Assignment"																																														
							343																																									
Qty of home + neighbouring NPAs								6																																								

- A** Available
- S** In-service or Assigned
- Z** Not Available

Canadian Geographic NPAs



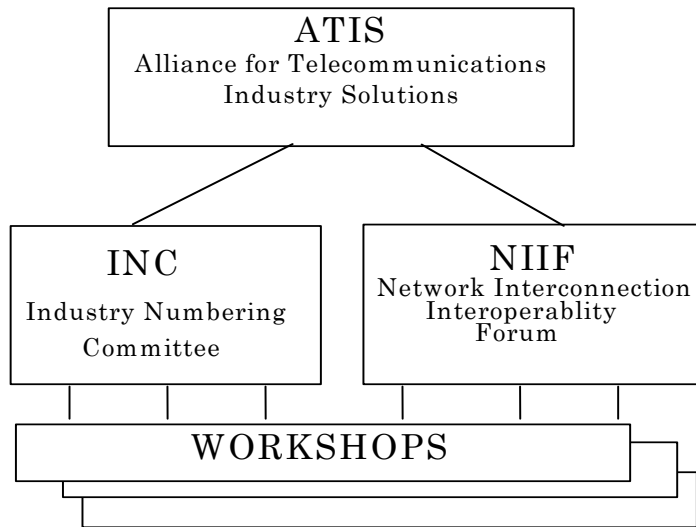
The following is a brief summary of Canadian geographic area code relief history:

- 1947 – AT&T assignment of 86 area codes (9 Canada, 77 continental USA) in format N(0/1)X-NNX-XXXX (where N = 2 to 9 and X = 0 to 9);
 - Ontario: 416, 613;
 - Quebec: 514, 418;
 - New Brunswick, Nova Scotia, PEI, Newfoundland & Labrador: 902;
 - Manitoba: 204;
 - Saskatchewan: 306;
 - Alberta: 403;
 - British Columbia: 604
- 1953 - new area code 519 for Ontario split from parts of 416 & 613
- 1955 – new area code 506 split from 902 for New Brunswick & Newfoundland & Labrador (902 retained for Nova Scotia & PEI)
- 1957 - new area code 705 for Ontario split from parts of 613 and 519
- 1957 - new area code 819 for Quebec split from parts of 514 & 418
- 1960 - Yukon & the southern & western parts of the Northwest Territories begin to interconnect and use Alberta 403 area code
- 1962 - new area code 709 for Newfoundland & Labrador split from 506
- 1962 - new area code 807 for Ontario split from 705
- 1970s - Quebec's 819 area code extended to include Bell Canada part of the Northwest Territories.
- 1973 – NANP CO Code format changes from NNX to NXX; NANP format becomes N(0 or 1)X – NXX – XXXX (Interchangeable CO Codes); first NPA to change is NPA 213 in California; other NPAs changed gradually until Interchangeable NPA Codes were introduced in 1995
- 1990 – First Canadian Interchangeable CO Codes implemented in NPA 416
- 1993 (Oct) - new area code 905 splits from 416: 416 retained for Toronto Ontario; 905 for areas surrounding Toronto.
- 1995 – Area Code format changes from N(0/1)X to NXX (Interchangeable NPA Codes); NANP format becomes NXX – NXX – XXXX
- 1996 (Oct) - new area code 250 splits from 604 in BC; 604 for southwestern mainland BC including Vancouver; 250 for Vancouver Island and BC Mainland excluding Lower Mainland
- 1997 (Oct) – new area code 867 implemented for Yukon and Northwest Territories (including Nunavut) including northern parts of Alberta previously served by 403 and northern parts of Quebec previously served by 819; 403 is made exclusive to Alberta ; 819 is made exclusive to Quebec
- 1998 (June) - new area code 450 splits from 514 in Quebec; 514 retained for Montreal area, 450 for area surrounding Montreal
- 1999 (Jan) - new area code 780 splits from 403 in Alberta; 780 for N. Alberta (Edmonton); 403 retained for S. Alberta (Calgary)
- 2001 (March) - new area code 647 overlay on 416 in Toronto Ontario; mandatory ten-digit local dialing implemented (first Canadian overlay)
- 2001 (June) - new area code 289 overlay on 905 surrounding Toronto Ontario; mandatory ten-digit local dialing implemented
- 2001 (Nov) - new area code 778 (Greater Vancouver Regional District, Abbotsford and Missions) concentrated overlay of part of 604 (Lower Mainland BC including Vancouver); remaining 604 NXXs retained for 604 area outside the concentrated overlay; mandatory ten-digit local dialing implemented in 604 & 778
- 2006 (Oct) – new area code 226 overlay of 519 S. W. Ontario; mandatory ten-digit local dialing implemented in 226 & 519

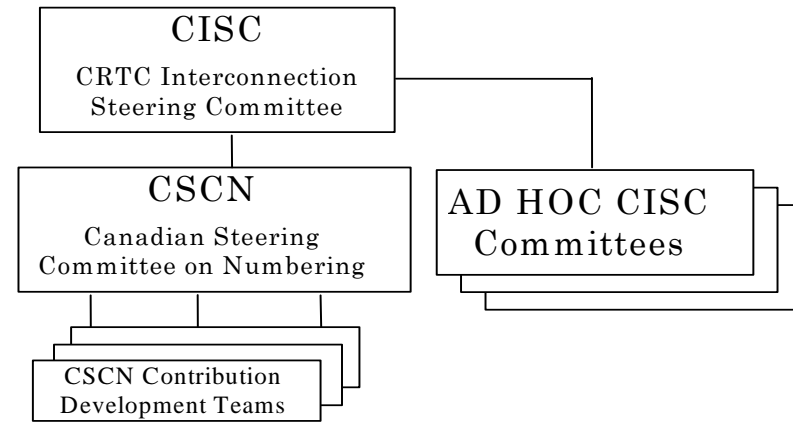
- 2006 (Oct) – mandatory ten-digit local dialing implemented in area codes 613 & 819
- 2006 (Nov) – new area code 438 overlay of 514 Montreal area; mandatory ten-digit local dialing implemented in area codes 438, 450 and 514
- 2007 (July) – new area code 778 concentrated overlay of 604 is extended to cover all of British Columbia (province-wide overlay) to provide relief for area code 250; remaining 604 CO Codes become assignable throughout 604 region
- 2008 (Sept) – new area code 581 overlay of 418 NE Quebec area including Quebec City; mandatory ten-digit local dialing implemented (mandatory ten-digit local dialing becomes universal in the Province of Quebec)
- 2008 (Sept) – new area code 587 overlay of 403 and 780 to serve all of Alberta (province-wide overlay); mandatory ten-digit local dialing implemented (mandatory ten-digit local dialing becomes universal in the Province of Alberta)
- 2008 (Sept) – mandatory ten-digit local dialing implemented in 250 area in British Columbia (mandatory ten-digit local dialing becomes universal in the Province of British Columbia)
- Total Canadian Geographic NPAs in-service at September 2008 = 27

Industry Fora

NANP



CANADIAN

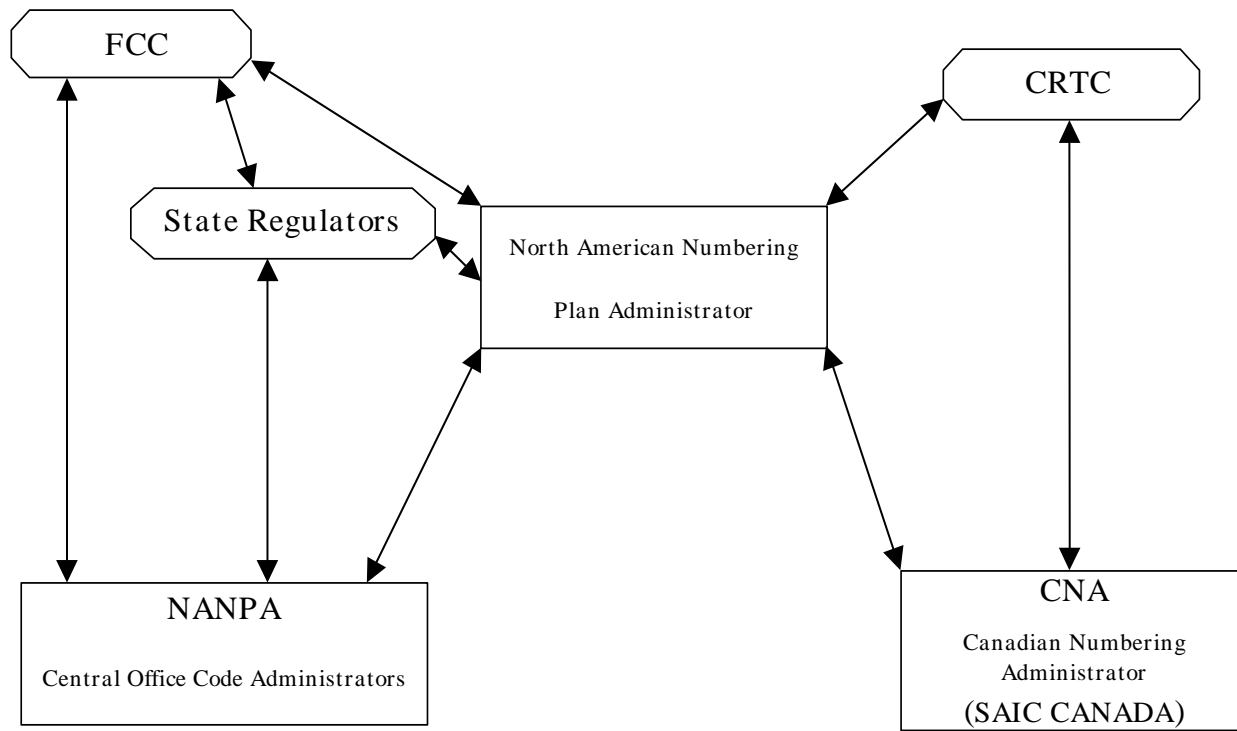


Industry Fora

Numbering Administration

United States

Canada



Numbering Administration

Distribution List

Regulatory Email
Allstream
Canada
iworkstation@allstream.com

Document Control
SaskTel-Regulatory Affairs
2121 Saskatchewan Drive, 12th floor
Regina, SK
Canada
S4P 3Y2
Telephone: 306-777-4208
Fax: 306-565-6216
document.control@sasktel.sk.ca

Regulatory E-Mail
Distributel Communications Limited
177 Nepean Street
Ottawa, ON
Canada
K2P 0B4
regulatory@distributel.ca

Laurence Baines
Sr. Telecom Provisioning & Cost Analyst
Rogers Wireless
8200 Dixie Road
Brampton, ON
Canada
L6T 0C1
Telephone: 647-747-4649
Fax: 647-747-4557
laurence.baines@rci.rogers.com

Bill Barsley
Manager SS7 & Switch Translations
TELUS Mobility
200 Consilium Place
Scarborough, ON
Canada
M1H 3J3
Telephone: 416-279-7989
Fax: 416-279-3930
bill.barsley@telus.com

Tim Beach
Manager
Roxborough Telephone Company Limited
PO BOX 190, 1745 McLead Road
Moose Creek, ON
Canada
K0C 1W0
Telephone: 613-538-2712
Fax: 613-538-2700
roxboro@ontarioeast.net

Mario Beaudoin
Directeur des services techniques / Technical Services
Manager
Coop de télécommunication (CoopTel)
5521 chemin de l'Aéroport
Valcourt, QC
Canada
J0E 2L0
Telephone: 450-532-1039
Fax: 450-532-3147
mbeaudoin@cooptel.qc.ca

Dennis Béland
Director, Regulatory Affairs, Telecommunications
Quebecor Media Inc.
612 St-Jacques, 15e étage Tour Sud
Montreal, QC
Canada
H3C 4M8
Telephone: 514-380-4792
Fax: 514-380-4664
regaffairs@quebecor.com

Marc Berruyer
Network Planner
Videotron Ltd
2155 Boul. Pie IX, 3e etage, bloc A
Montreal, QC
Canada
H1V 2E4
Telephone: 514-380-4255
Fax: 514-899-8452
marc.berruyer@vtl.quebecor.com

Olena Bilozerska
TELUS Mobility
200 Consilium Place Suite 1600
Scarborough, ON
Canada
M1H 3J3
Telephone: 416-279-8521
Olena.Bilozerska@telus.com

Doug Birdwise
Assoc. Dir. - Network Planning
Bell Canada
160 Elgin St., Room 1790 – 17th Floor (Area B)
Ottawa, ON
Canada
K1G 3J4
Telephone: 613-781-4366
Fax: 613-781-2569
doug.birdwise@bell.ca

Samer Bishay
Iristel Inc.
11 Bowan Court
Toronto, ON
Canada
M2K 3A8
Telephone: 416-299-4521
Fax: 416-227-9059
sbishay@iristel.com

Guyllaine Bourque
Network Traffic Planner
Fido Solutions Inc
800 de la Gauchetiere St West Suite 400
Montreal, QC
Canada
H5A 1K3
Telephone: 514-244-6880
Fax: 514-846-6935
guyllaine.bourque@rci.rogers.com

Laurie Bowie
Network Planning
Bell Canada
162 Southfield Dr.
Strathroy, ON
Canada
N7G 3V6
Telephone: 519-245-8234
Fax: 519-245-5917
laurie.storm@bell.ca

Kathy Bright
Administration
North Frontenac Telephone Company Limited
146 Foundry Street
Baden, ON
Canada
N0B 1G0
Telephone: 519-634-5242
Fax: 519-634-5736
nfrontenac@kw.igs.net

Glen Brown
Project Engineer
SAIC Canada
60 Queen Street, Suite 1516
Ottawa, ON
Canada
K1P 5Y7
Telephone: 613-563-7242
Fax: 613-563-3399
browng@saiccanada.com

Melanye Caisse
Telecom Analyst
ISP Telecom Inc
1155 Boul Rene-Levesque Ouest Suite 2500
Montreal, QC
Canada
H3B 2K4
Telephone: 416-548-4819
Fax: 416-548-4818
melanye@isptelecom.net

Daniel Cantin
Network Planning Voice Services
Telebec & NorthernTel Group
7151 Jean-Talon East
Anjou, QC
Canada
H1M 3N8
Telephone: 514-493-5491
Fax: 514-493-5650
dcantin@telebec.com

Fiona Clegg
CO Code Administration
SAIC Canada
60 Queen Street, Suite 1516
Ottawa, ON
Canada
K1P 5Y7
Telephone: 613-563-7242 Ext. 310
Fax: 613-563-3399
cleggf@saiccanada.com

Toby Cockcroft
Network Services
Globility Communications Corporation
108-5343 Dundas St West
Toronto, ON
Canada
M9B 6K5
Telephone: 416-238-8804
Fax: 416-238-8844
tcockcroft@globility.ca

Terry Connolly
Director
TELUS Communications (B.C.) Inc.
3777 Kingsway, Floor 18
Burnaby, BC
Canada
V5H 3Z7
Telephone: 604-432-2740
Fax: 604-430-9653
terry.connolly@telus.com

Chris Cope
Economic Development Consultant
Economic and Environmental Sustainability Branch, City
of Ottawa
110 Laurier Avenue West, 4th Floor
Ottawa, ON
Canada
K1P 1J1
Telephone: (613) 580-2424 ext. 28991
Fax: (613) 560-6028
Chris.Cope@ottawa.ca

Yves Cote
9164-3122 Quebec inc
111 rue de 12-Novembre
Nicolet, QC
Canada
J3T 1S3
Telephone: 819-268-2546
Fax: 819-293-6120
yves.cote@sogetel.com

Tom Crowley
Acting Manager, Public Information, Client Services and
Public Information
City of Ottawa
Ottawa, ON
Canada
Telephone: 613-580-2424 ext. 21608
thomas.crowley@ottawa.ca

Tom Crowley
Acting Manager, Public Information
Client Services and Public Information, City of Ottawa
Ottawa, ON
Canada
Telephone: 613-580-2424 Ext 21608
Thomas.Crowley@ottawa.ca

Mark Cuccia
317 Guilbeau Road, Apt.207-E
Lafayette, LA
USA
70506
Telephone: 504-460-0647
markjucuccia@yahoo.com

David J. Currie
Chair
CANASA Communications
Committee
506 Christina Street North
Sarnia, ON
Canada
N7T 5W4
Telephone: 519-344-7509
Fax: 519-336-8927
dcurrie@src.net

Jean-Marc D'Aoust
Consultant
Cogeco Cable Inc.
1720 Route 200
Limoges, ON
Canada
K0A 2M0
Telephone: 613-443-1635
jmdaoust@cgocable.ca

Diane Dolan
Business Analyst
Distributel Communications Limited
177 Nepean Street
Ottawa, ON
Canada
K2P 0B4
Telephone: 613-212-5003
Fax: 613-237-7009
diane.dolan@distributel.ca

John E. Downs
General Manger & President
Nexicom Telephones Inc.
5 King Street East, P.O. Box 178
Millbrook, ON
Canada
L0A 1G0
Telephone: 705-932-4100
Fax: 416-767-2849
jdowns@nexicom.net

Paul Downs
Director
Ontario Telecommunications Association
5160 Explorer Drive, Suite #5
Mississauga, ON
Canada
L4W 4T7
Telephone: 905-282-0771
Fax: 905-282-1675
pdowns@nexicom.net

Shellene Drakes
Telus Mobility
Suite 1600, 200 Consilium
Scarborough,, ON
Canada
M1H 3J3
Telephone: 416-279-4880
shellene.drakes@telusmobility.com

Gord Duesburry
Telecom Specialist
Globalstar Canada Co
100 - 115 Matheson Blvd. W.
Mississauga, ON
Canada
L5R 3L1
Telephone: 905-712-6693
Fax: 905-890-2175
Gduesburry@globalstar.ca

Jean-Michel Dupuis
Coordonnateur, Services Publiques
Rogers Wireless Partnership (RWP)
800 rue de la Gauchetiere Ouest
Montreal, QC
Canada
H5A 1K3
Telephone: 514-928-3911
Fax: 1-800-506-3962
jeanmichel.dupuis@rci.rogers.com

Yves Duval
Directeur de l-exploitation
Sogetel inc.
111 Rue du 12-Novembre
Nicolet, QC
Canada
J3T 1S3
Telephone: 819-293-1266
Fax: 819-293-6120
yves.duval@sogetel.com

Simon Edgett
Network Interconnection & LNP Manager
GT Group
1500-1066 W Hastings St
Vancouver, BC
Canada
V6E 3X1
Telephone: 604-484-1010
Fax: 604-484-1110
simon.edgett@bell.ca

J. David Farnes
Vice President, Regulatory Affairs
Canadian Wireless Telecommunications Association
(CWTA)
130 Albert Street, Suite 1110
Ottawa, ON
Canada
K1P 5G4
Telephone: 613-233-4888 ext. 106
Fax: 613-233-2032
documentcontrol@cwta.ca

Christian Fortin
NPA Relief Project Manager
Bell Canada
1050 Beaver Hall 10 Sud
Montreal, QC
Canada
H2Z 1S4
Telephone: 514-870-3953
christian.fortin@bell.ca

Paul Frappier
Téléphone Milot Inc.
2653 Laflèche, C.P. 30
Saint- Paulin, QC
Canada
J0K 3G0
Telephone: 819-268-2050
Fax: 819-268-2951
paul.frappier@telmilot.com

Suzanne Gagnon
La Compagnie de Téléphone Nantes Inc.
178, Rang St-Michel
Lambton, QC
Canada
GOM 1H0
Telephone: 819-547-3422
Fax: 418-486-7380
nantel@tellambton.net

Anne Gertzbein
Manager Ancillary Services (411/911) & Local
PIC/CARE
MTS Allstream
200 Wellington Street West
Toronto, ON
Canada
M5V 3G2
Telephone: 416-640-5229
Fax: 416-640-5219
anne.gertzbein@mtsallstream.com

Helene Gingras
Telebec Ltee
555 Central, 3e Etage
Val-d'Or, QC
Canada
J9P 1P6
Telephone: 819-824-7277 ext.7277
Fax: 819-824-7044
hgingras@telebec.com

Debbie Girard
General Manager
Ontario Telecommunications Association
P.O. Box 249, 1230 Colonial Road, Unit #1
Navan, ON
Canada
K4B 1J5
Telephone: 613-835-1552 Ext. 223
Fax: 613-835-4414
debbie.girard@bellnet.ca

Mylene Grenier
Manager Switched Network Design
Bell Canada
1050 Beaver Hall 170-07
Montreal, QC
Canada
Telephone: 514-870-2262
Fax: 514-870-5659
mylene.grenier@bell.ca

William Grier
General Manager
Lansdowne Rural Telephone Co. Ltd.
42 King St. West, PO BOX 9
Lansdowne, ON
Canada
K0E 1L0
Telephone: 613-659-2222
Fax: 613-659-2226
Wagrier@1000island.net

Willie Grieve
Vice President, Public Policy & Regulatory Affairs
TELUS Communications
10020 - 100 Street NW
Edmonton, AB
Canada
T5J 0N5
Telephone: 780-493-6590
Fax: 780-493-6519
regulatory.affairs@telus.com

Teresa Griffin-Muir
Vice President - Regulatory Affairs
MTS Allstream Inc.
45 O'Connor Street, Suite 1400
Ottawa, ON
Canada
K1P 1A4
Telephone: 613-688-8789
Fax: 613-688-8303
iworkstation@mtsallstream.com

Glenn Grubb
General Manager
Huron Telecommunications Co-operative Limited
60 Queen Street
Ripley, ON
Canada
N0G 2R0
Telephone: 519-395-2625
Fax: 519-395-3738
grubb@hurontel.on.ca

Dulari Harrichand
Project Manager IS/IT 514 Overlay
Bell Canada
1 Dundas Street West, Floor 9
Toronto, ON
Canada
M5G 1Z3
Telephone: 416-215-2243
Fax: 416-585-2347
dulari.harrichand@bell.ca

Marian Hearn
Project Executive
Canadian LNP Consortium Inc.
11-300 Earl Grey Drive, Suite 113
Kanata, ON
Canada
K2T 1C1
Telephone: 613-256-2600
Fax: 800-406-9250
hearn@clnpc.ca

Lynne Hewitson
Membership Manager
Canadian Security Association (CANASA)
610 Alden Road
Markham, ON
Canada
L3R 9Z1
Telephone: 905-513-0622 ext 223
Fax: 905-513-0624
membership@canasa.org

Larry Hishon
Vice-President Business Development
Fibernetics Corporation
583 Eastgate Walk
Waterloo, ON
Canada
N2K 2V9
Telephone: 519-571-7433
Fax: 519-772-5014
lhishon@fibernetics.ca

Rhonda Hunt
The Lansdowne Rural Telephone Company
Lansdowne, ON
Canada
Telephone: 613-659-2222
Fax: 613-659-2226
rhunt@1000island.net

Stephanie Jackson
Manager - Public Services Integration; Traffic
Engineering
Rogers Wireless
1 Mount Pleasant Rd., 9th Floor
Toronto, ON
Canada
M4C 2Y5
Telephone: 647-747-4402
stephanie.jackson@rci.rogers.com

Pamela D. Jones
Senior Regulatory Policy Advisor
TELUS Communications Inc.
45 O'Connor Street, Suite 1200
Ottawa, ON
Canada
Telephone: 613-597-8278
Fax: 613-597-8306
pamela.jones@telus.com

Kira Keast
Telephone: 416-935-7494
kira.keast@rci.rogers.com

Anthony H.A. Keenleyside
Representative
City of Ottawa
1768 Dunkirk Cres.
Ottawa, ON
Canada
K1H-5T4
Telephone: 613-523-4904
anthony.keenleyside@gmail.com

Anthony H.A. Keenleyside
Partner
McCarthy Tetrault LLP
40 Elgin Street, Suite 1400
Ottawa, ON
Canada
K1P 5K6
Telephone: 613-238-2112
Fax: 613-563-9386
akeenleyside@mccarthy.ca

Suresh Khare
CO Code Manager
SAIC Canada
60 Queen Street, Suite 1516
Ottawa, ON
Canada
K1P 5Y7
Telephone: 613-563-7242 Ext. 315
Fax: 613-563-3399
khares@saiccanada.com

Jeanne Lacombe
Senior Analyst
Canadian Radio-television and Telecommunications
Commission
Central Building Les Terrasses de la Chaudière 1
Promenade du Portage
Gatineau, QC
Canada
K1A 0N2
Telephone: 819-997-4586
jeanne.lacombe@crtc.gc.ca

Peter Lang
Manager, Carrier Relations
Rogers Cable Communications Inc. (RCCI)
333 Bloor Street East
Toronto, ON
Canada
M4W 1G9
Telephone: 416-935-7918
Fax: 416-498-3002
Peter.Lang@rci.rogers.com

Elise Lavigne
Coordinator
MTS Allstream
Calgary, AB
Canada
Telephone: 403-705-6946
Fax: 403-705-6283
elise.lavigne@mtsallstream.com

Sylvain Leblanc
IVIC Telecom s.e.n.c
3 rue du Centre Sportif
Warwick, QC
Canada
J0A 1M0
Telephone: 819-358-5716
Fax: 819-358-5710
sleblanc@telwarwick.qc.ca

Johanne Lemay
Lemay-Yates Associates Inc.
1200, boul. de Maisonneuve ouest, Suite 7F
Montreal, QC
Canada
H3A 0A1
Telephone: 514-288-6555
Fax: 514-288-6555
regulatory@lya.com

Natalie Lessard
SAIC Canada
60 Queen Street, Suite 1516
Ottawa, ON
Canada
K1P 5Y7
Telephone: 613-563-7242
Fax: 613-563-3399
lessardn@saiccanada.com

Venice Leung
Technical Planner
Allstream
438 University Ave, 5th Floor
Toronto, ON
Canada
M5G 2K8
Telephone: 416-640-9233
Fax: 416-644-9672
venice.leung@allstream.com

Chris Liu
Senior IP Telephony Applications Designer
Rogers Cable Communications Inc.
10 Dyas Road
Don Mills, ON
Canada
M3B 1V5
Telephone: 416-649-7290
Fax: 416-649-7201
chrisliu@gmail.com

Chris Liu
Senior IP Telephony Applications Designer
Rogers Cable Communications Inc.
10 Dyas Road
Don Mills, ON
Canada
M3B 1V5
Telephone: 416-649-7290
Fax: 416-649-7201
chris.liu@rci.rogers.com

Steve Lynn
General Manager
Westport Telephone Company Limited
28 Main Street, P.O. Box 580
Westport, ON
Canada
K0G 1X0
Telephone: 613-273-0104
Fax: 613-273-2323
steve@wtccommunications.ca

Dilip Manucha
Manager Facilities Planning
Rogers Wireless Inc.
1 Mount Pleasant Road, 9th Floor
Toronto, ON
Canada
M4Y 2Y5
Telephone: 416-935-6144
Fax: 416-935-7525
dmanucha@rci.rogers.com

Bill Mason
Manager, Numbering Administration
Canadian Radio-television and Telecommunications
Commission
Central Building Les Terrasses de la Chaudière 1
Promenade du Portage
Gatineau, ON
Canada
K1A 0N2
Telephone: 819-953-8882
Fax: 819-953-0795
bill.mason@crtc.gc.ca

Deirdre Massiah-Gomes
TELUS Mobility
200 Consilium Place, Suite 1600
Scarborough, ON
Canada
M1H 3J3
Telephone: 416-279-3070
Fax: 416-279-3949
deirdre.massiah-gomes@telus.com

Andrew Matoga
President
ISP Telecom
1155 Boul Rene-Levesque O Suite 2500
Montreal, QC
Canada
H3B 2K4
Telephone: 416-548-4848
Fax: 416-548-4847
andrew@isptelecom.net

Kevin McGouran
Manager - Customer Translations
MTS Allstream
370 King Street, Floor 6
Toronto, ON
Canada
M5V 1J9
Telephone: 416-204-5868
Fax: 416-644-9864
kevin.mcgouran@allstream.com

Keith McIntosh
Manager, Regulatory Affairs
Canadian Wireless Telecommunications Association
(CWTA)
130 Albert Street, Suite 1110
Ottawa, ON
Canada
K1P 5G4
Telephone: 613-233-4888 ext. 213
Fax: 613-233-2032
kmcintosh@cwta.ca

David McKeown
View Communications Inc.
1668 Valentine Gdn.
Mississauga, ON
Canada
L5J 1H5
Telephone: 905-823-9996
Fax: 905-823-9288
dmckeown@viewcom.ca

David J. McNulty
President
OREONNUA c/o Export Development Canada (EDC)
151 O'Connor
Ottawa, ON
Canada
K1A 1K3
Telephone: 613-598-6832
Fax: 613-598-3142
dmcnulty@edc.ca

Vadim Medvedev
Carrier Relations
Rogers Cable Communications Inc.
8200 Dixie Road
Brampton, ON
Canada
L6T 0C1
Telephone: 647-747-4143
vadim.medvedev@rci.rogers.com

Jacqueline Michelis
Associate Director - Public Affairs Corporate
Communications
Bell Canada
110 O'Connor Street, 6-S
Ottawa, ON
Canada
K1P 1H1
Telephone: 613-785-1427
jacqueline.michelis@bell.ca

Alain Miguelez
Planner III, Research and Projections
City of Ottawa
110 Laurier Avenue West
Ottawa, ON
Canada
K1P 1J1
Telephone: 613-580-2424 ext. 27617
Alain.Miguelez@ottawa.ca

Gabriel Miller
Senior Policy Analyst, Infrastructure, Transit & Municipal
Revenue
Federation of Canadian Municipalities
24 Clarence Street
Ottawa, ON
Canada
K1N 5P3
Telephone: 613-907-6316
Fax: 613-241-7440
gmiller@fcm.ca

Peter Milliken
Speaker of the House of Commons
House of Commons
316N Centre Block
Ottawa, ON
Canada
K1A 0A6
Telephone: 613-992-2013
Fax: 613-995-6298
Milliken.P@parl.gc.ca

Daniel Narwa
Daniel Narwa Real Estate Brokerage
611 Kirkwood Avenue
Ottawa, ON
Canada
K1Z 5X5
Telephone: 613-729-4728
Fax: 613-729-4728
rebnd@can.rogers.com

Frank Norman
Numbering Administrator
TELUS
3777 Kingsway, 10th Floor
Burnaby, BC
Canada
V5H 3Z7
Telephone: 604-432-8144
Fax: 604-432-2150
frank.norman@telus.com

Simon-Pierre Olivier
Analyst, Regulatory Affairs
Microcell Telecommunications Inc.
1200 McGill College, Bureau 800
Montreal, QC
Canada
H3B 4G7
Telephone: 514-350-6595
simon-pierre.olivier@fidomobile.ca

Martha Overton
Executive Assistant
North Renfrew Telephone Company
P.O. Box 70, 4 Stewart Street
Beachburg, ON
Canada
K0J 1C0
Telephone: 613-638-5483
Fax: 613-638-7039
moverton@nrtco.net

David E. Palmer
Director, Regulatory Matters
Bell Canada
105, rue Hotel de Ville, 6ieme etage
Hull, QC
Canada
J8X 4H7
Telephone: 819-773-6030
Fax: 819-770-7638
bell.regulatory@bell.ca

Glenn Pilley
Canadian Numbering Administrator
SAIC Canada
60 Queen Street, Suite 1516
Ottawa, ON
Canada
K1P 5Y7
Telephone: 613-563-7242 Ext. 317
Fax: 613-563-9293
pilleyg@saiccanada.com

Lucie Pugliese
Administrator
Numbering Alliance
1575 Saturne
Brossard, QC
Canada
J4X 1N4
Telephone: 450-465-8277
Fax: 450-465-0703
lucie.pugliese@sympatico.ca

Paul Robinson
Manager - Voice Network Planning
Rogers Cable & Telecom Network
Toronto, ON
Canada
Telephone: 647-747-4197
Fax: 647-747-4644
paul.robinson@rci.rogers.com

Bill Sandiford
Telnet Communications
50 Richmond St E
Oshawa, ON
Canada
L1G7C7
Telephone: 905-674-2000
Fax: 905-728-7918
bill@telnetcommunications.com

Leo Santoro
Network Analyst
Bell Mobility
2920 Matheson Blvd East, 6th floor
Mississauga, ON
Canada
L4W 4M7
Telephone: 905-282-3021
Fax: 905-282-3106
leo.santoro@bell.ca

Donna Sguigna
Manager- Adjunct Capacity Management
Bell Canada
100 Borough Dr Floor 5 Blue
Scarborough, ON
Canada
M1P 4W2
Telephone: 416-296-6172
Fax: 416-296-0685
donna.sguigna@bell.ca

Angie Specic
Director, Marketing Communications & Advertising
Allstream
200 Wellington Street West
Toronto, ON
Canada
M5V 3G2
Telephone: 416-345-2131
angie.specic@allstream.com

Brenda Stevens
Director - Intercarrier Relations
Rogers Cable Communications
333 Bloor St. East, 9th Floor
Toronto, ON
Canada
M4W 1G9
Telephone: 416-935-4898
Fax: 416-935-4875
brenda.stevens@rci.rogers.com

Bogdan Tanasie
IP Telephony Applications Designer
Rogers Cable Communications Inc.
10 Dyas Road
Don Mills, ON
Canada
M3B 1V5
Telephone: 416-649-7281
bogdan.tanasie@rci.rogers.com

Gerry Thompson
Manager, Intercarrier Relations
Rogers Communications Inc. (RCI)
333 Bloor Street East, 9th Floor
Toronto, ON
Canada
M4W 1G9
Telephone: 416-935-5239
Fax: 416-935-7212
Gerry.Thompson@rci.rogers.com

Joel Thorp
Director - Intercarrier Relations
Rogers AT&T Wireless
333 Bloor St. East, 9th Floor
Toronto, ON
Canada
M4W 1G9
Telephone: 416-935-7213
Fax: 416-935-7719
joel.thorp@rci.rogers.com

Jude Vanniasinghe
Manager - Equipment and Number Solutions (ENS)
Bell Canada
100 Borough Drive, Floor 5 Blue
Toronto, ON
Canada
M1P 4W2
Telephone: 416-296-6176
Fax: 416-296-0685
jude.vanniasinghe@bell.ca

Alice Watt
Senior Manager, Customer Communications
Rogers Communications Inc.
333 Bloor Street East
Toronto, ON
Canada
M4W 1G9
Telephone: 416-935-8786
Fax: 416-935-4811
alice.watt@rci.rogers.com

Robert Yates
Lemay-Yates Associates Inc.
1200, De Maisonneuve Blvd. West, Suite 7F
Montreal, QC
Canada
H3A 0A1
Telephone: 514-288-6555
Fax: 514-288-6555
LYA@LYA.com

Tom Zimnicki
Chief Technology Officer
Fibernetics Corp
55 Northfield Dr East Suite 210
Waterloo, ON
Canada
N2K 3T6
Telephone: 519-489-6700
tom@fibernetics.ca